



**PREFAB ACOUSTIC SOLUTIONS**

## OVERVIEW SOUND ABSORPTION



Metecno Sound Website

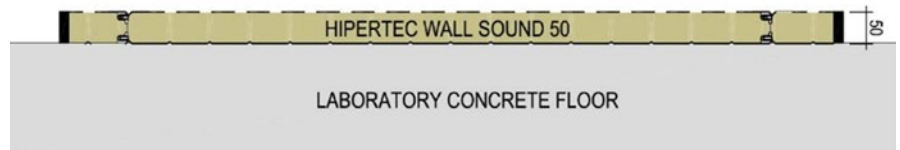


# Measurement of the sound absorption

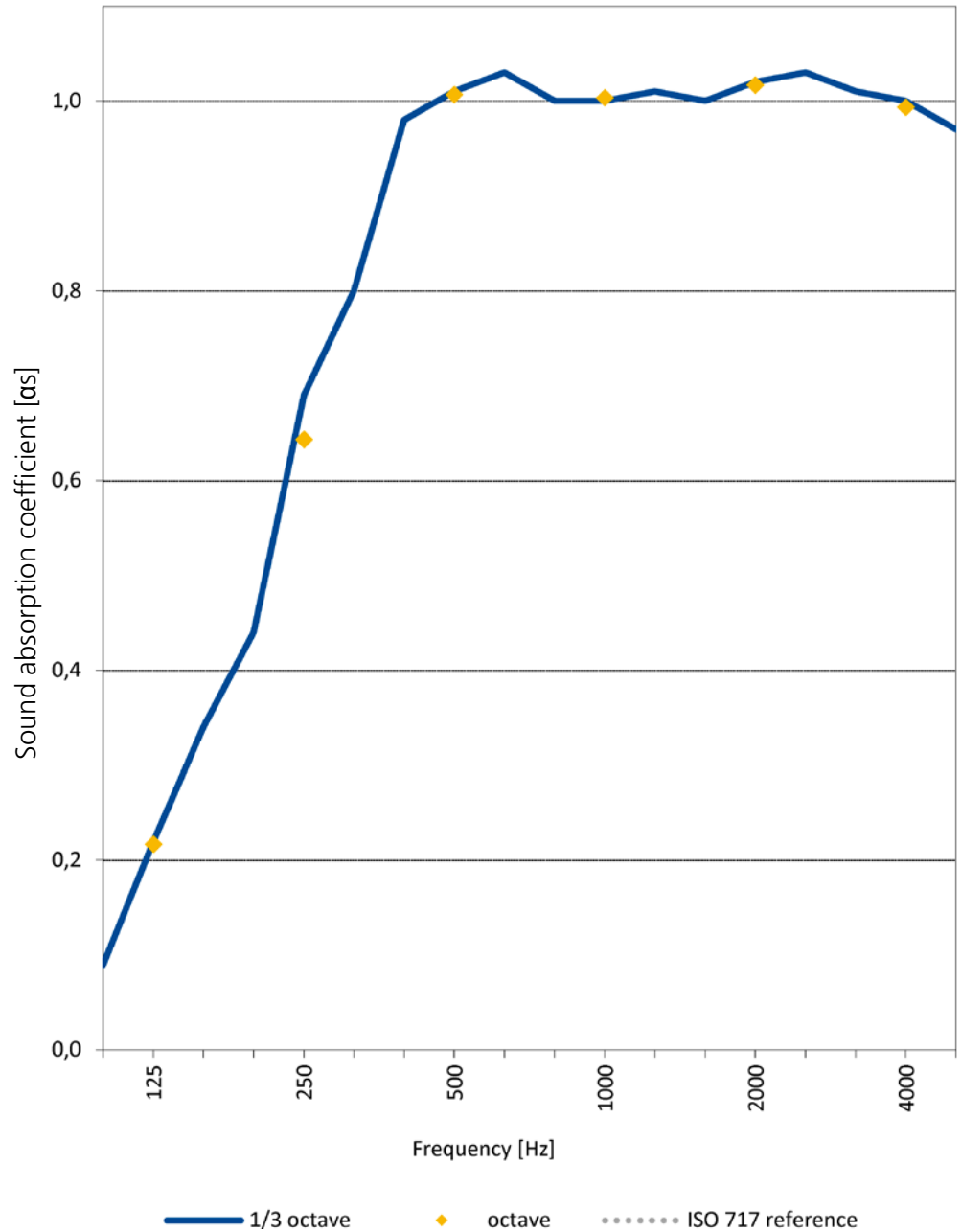
## Product

Hipertec Wall Sound 50 mm

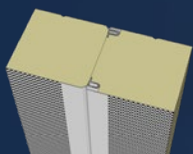
Surface 12,0 m<sup>2</sup>  
 Thickness 50 mm  
 Standard ISO354:2003



Freq. [Hz]	$\alpha$	
	1/3 oct. oct.	
125	0,09 0,22 0,34	0,22
250	0,44 0,69 0,80	0,64
500	0,98 1,01 1,03	1,01
1000	1,00 1,00 1,01	1,00
2000	1,00 1,02 1,03	1,02
4000	1,01 1,00 0,97	0,99



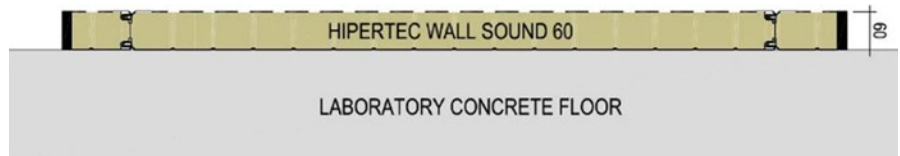
$\alpha_w$  0,95  
 NRC 0,95  
 Country Netherlands  
 Laboratory Peutz  
 Report nr. 048  
 Test year 2015



# Measurement of the sound absorption

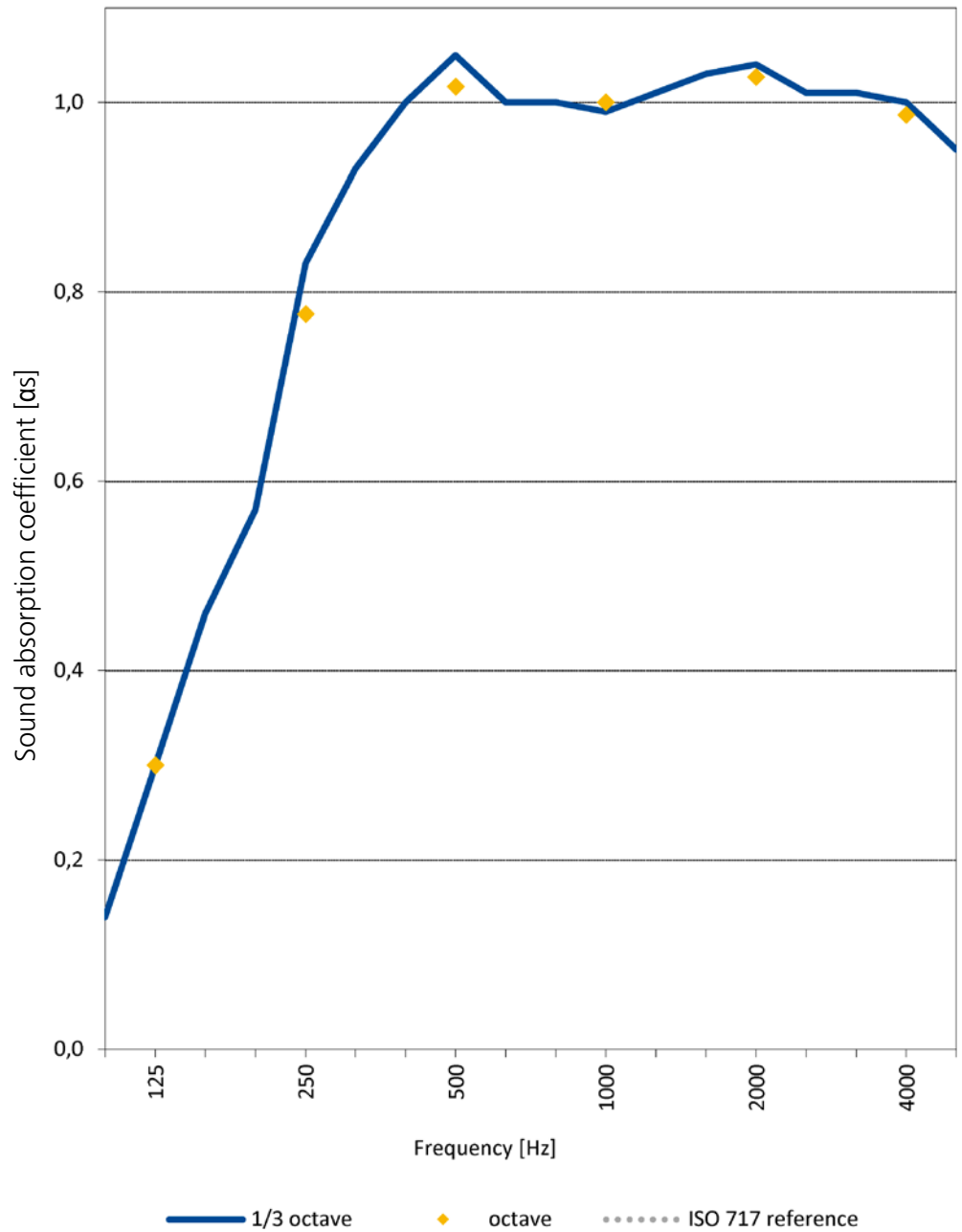
## Product

Hipertec Wall Sound 60 mm

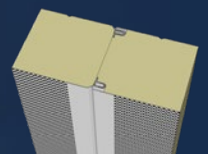


Surface 12,0 m<sup>2</sup>  
 Thickness 60 mm  
 Standard ISO354:2003

Freq. [Hz]	$\alpha$	
	1/3 oct. oct.	
125	0,14 0,30 0,46	0,30
250	0,57 0,83 0,93	0,78
500	1,00 1,05 1,00	1,02
1000	1,00 0,99 1,01	1,00
2000	1,03 1,04 1,01	1,03
4000	1,01 1,00 0,95	0,99



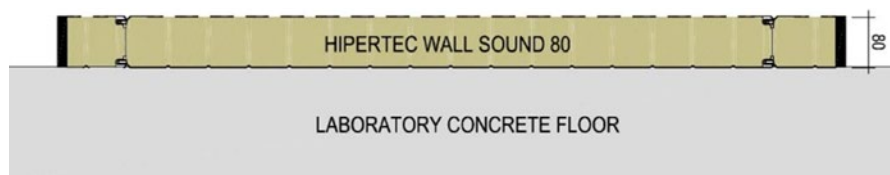
$\alpha_w$  1,00  
 NRC 1,00  
 Country Netherlands  
 Laboratory Peutz  
 Report nr. 047  
 Test year 2015



# Measurement of the sound absorption

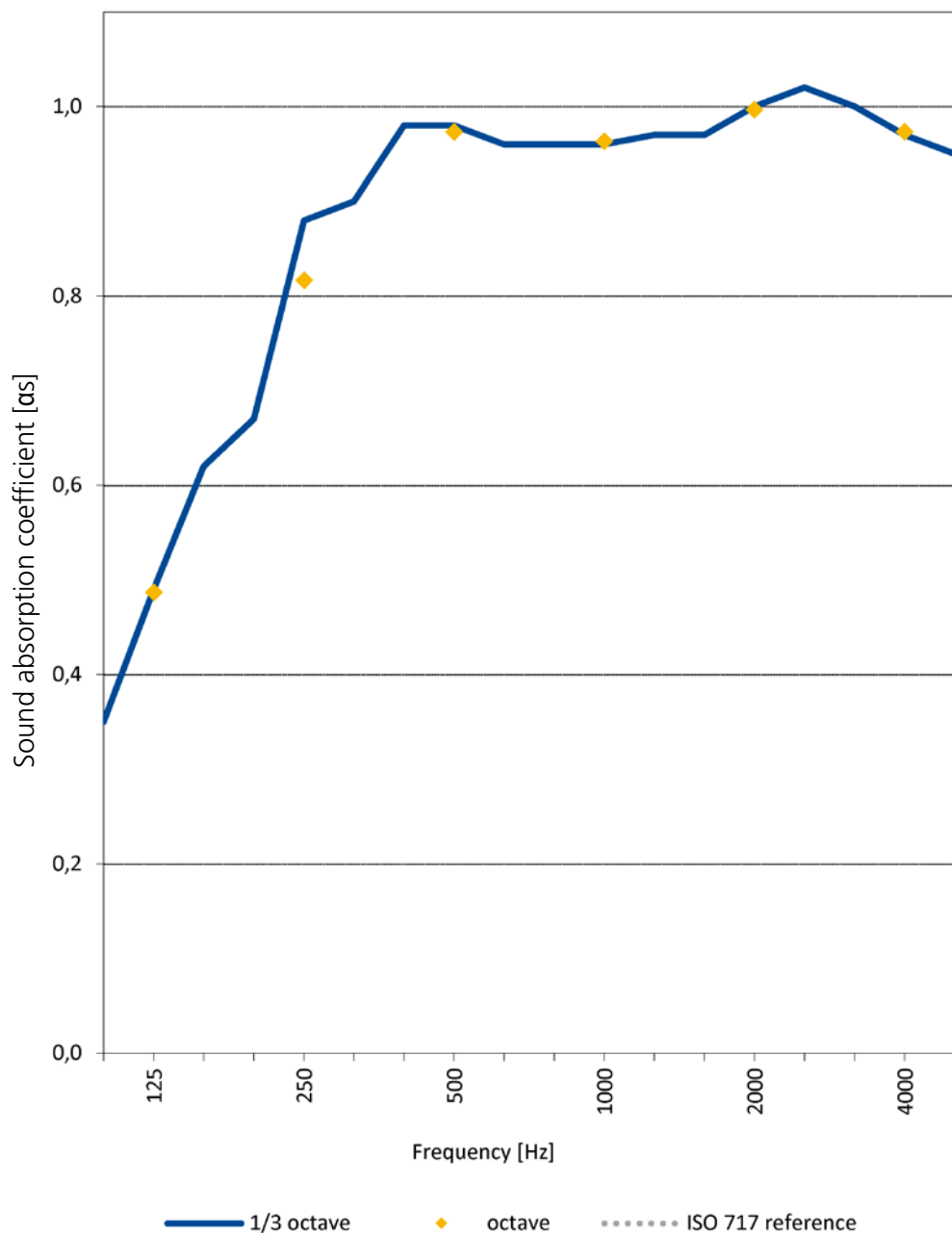
## Product

Hipertec Wall Sound 80 mm

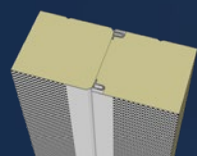


Surface 12,0 m<sup>2</sup>  
 Thickness 80 mm  
 Standard ISO354:2003

Freq. [Hz]	$\alpha$	
	1/3 oct. oct.	
125	0,35 0,49 0,62	0,49
250	0,67 0,88 0,90	0,82
500	0,98 0,98 0,96	0,97
1000	0,96 0,96 0,97	0,96
2000	0,97 1,00 1,02	1,00
4000	1,00 0,97 0,95	0,97

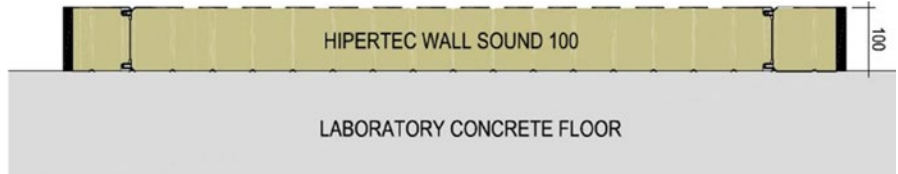


$\alpha_w$  1,00  
 NRC 0,95  
 Country Netherlands  
 Laboratory Peutz  
 Report nr. 045  
 Test year 2015



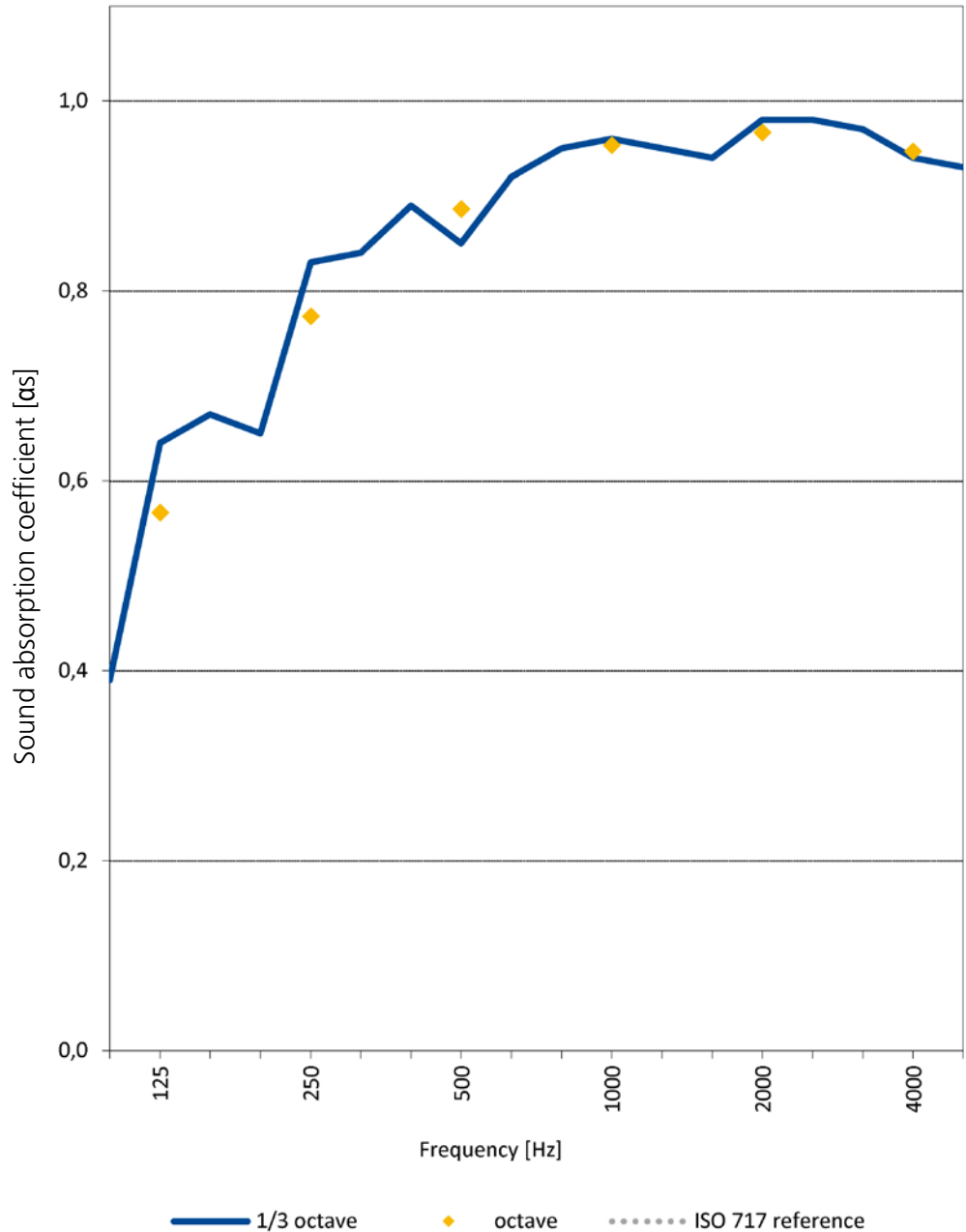
# Measurement of the sound absorption

Product  
Hipertec Wall Sound 100 mm

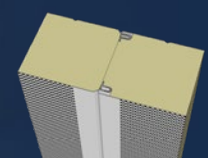


Surface 12,0 m<sup>2</sup>  
Thickness 100 mm  
Standard ISO354:2003

Freq. [Hz]	$\alpha$	
	1/3 oct. oct.	
125	0,39 0,64 0,67	0,57
250	0,65 0,83 0,84	0,77
500	0,89 0,85 0,92	0,89
1000	0,95 0,96 0,95	0,95
2000	0,94 0,98 0,98	0,97
4000	0,97 0,94 0,93	0,95

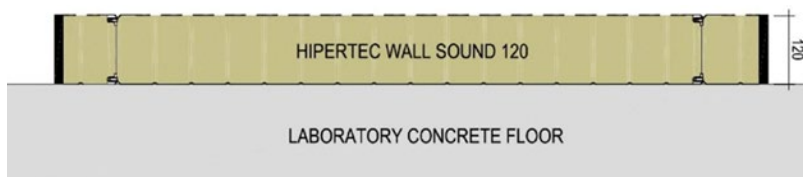


$\alpha_w$  0,95  
NRC -  
Country Netherlands  
Laboratory Peutz  
Report nr. 038  
Test year 2020



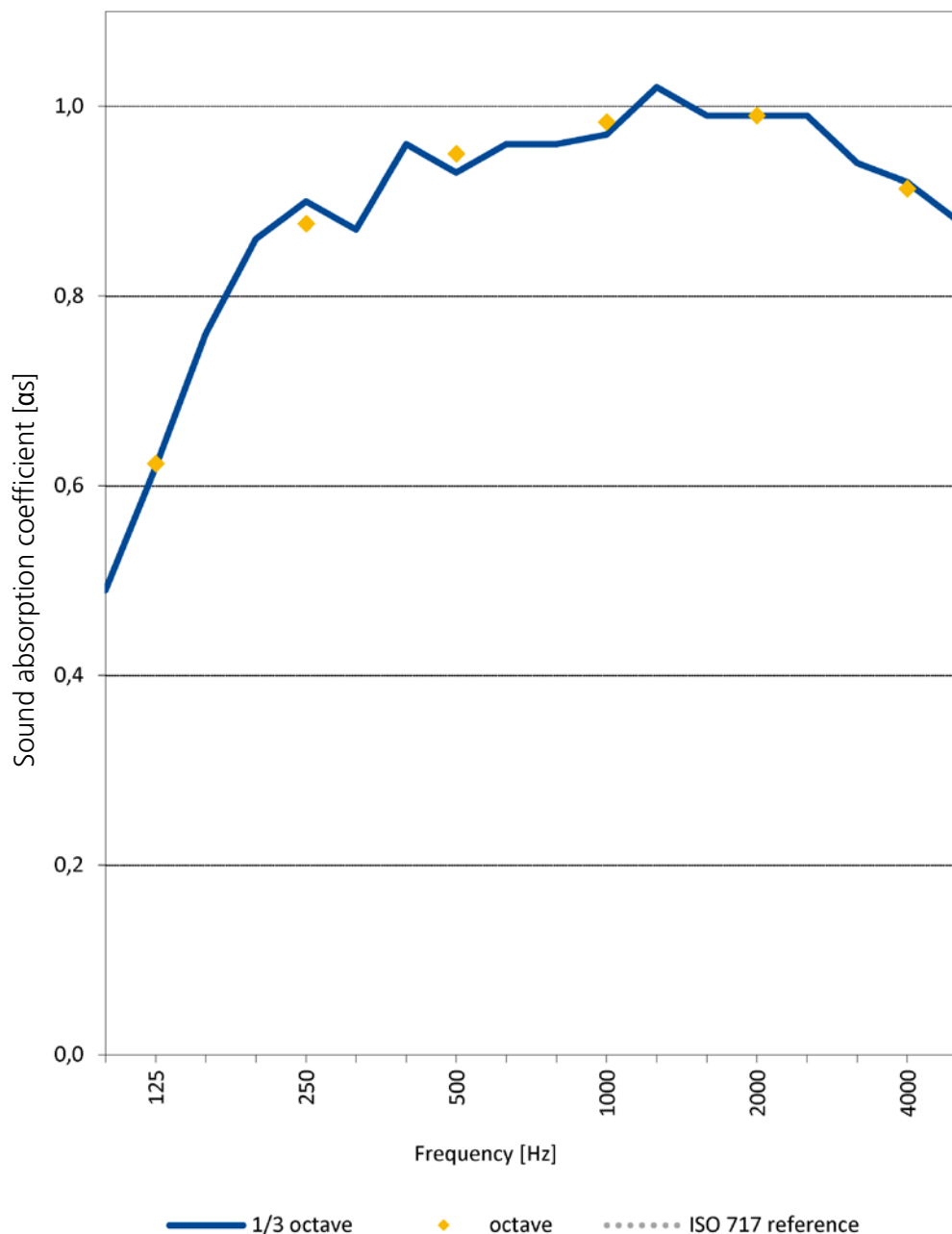
# Measurement of the sound absorption

Product  
Hipertec Wall Sound 120 mm

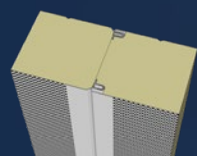


Surface 15,1 m<sup>2</sup>  
Thickness 120 mm  
Standard ISO354:1993

Freq. [Hz]	$\alpha$	
	1/3 oct. oct.	
125	0,49 0,62 0,76	0,62
250	0,86 0,90 0,87	0,88
500	0,96 0,93 0,96	0,95
1000	0,96 0,97 1,02	0,98
2000	0,99 0,99 0,99	0,99
4000	0,94 0,92 0,88	0,91

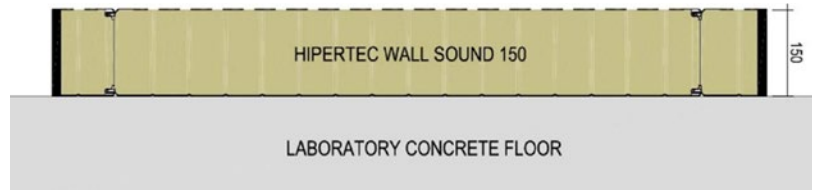


$\alpha_w$  1,00  
NRC -  
Country Germany  
Laboratory Fraunhofer  
Report nr. 031  
Test year 2003



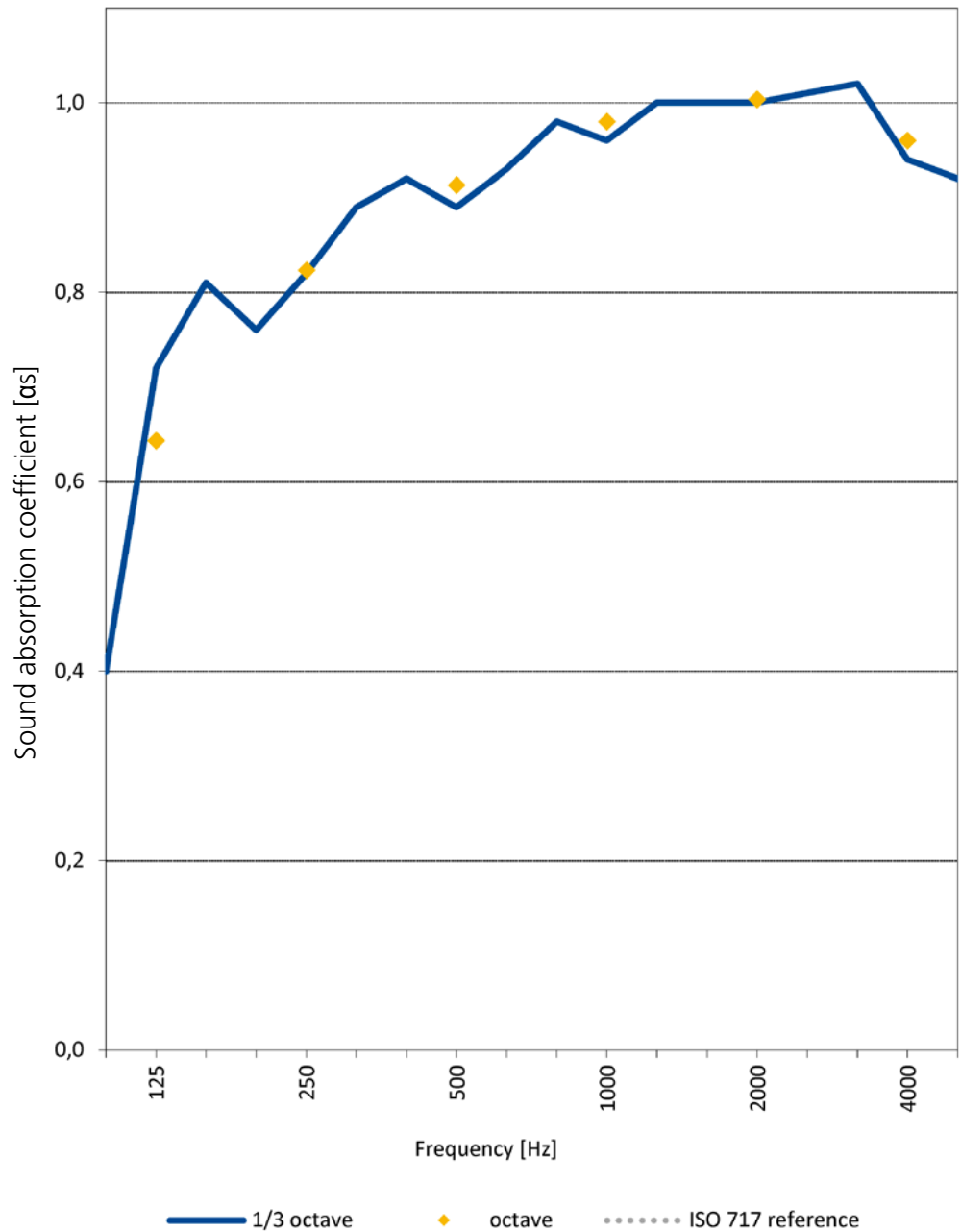
# Measurement of the sound absorption

Product  
Hipertec Wall Sound 150 mm

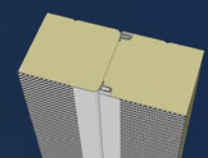


Surface 12,0 m<sup>2</sup>  
Thickness 150 mm  
Standard ISO354:2003

Freq. [Hz]	$\alpha$	
	1/3 oct. oct.	
125	0,40 0,72 0,81	0,64
250	0,76 0,82 0,89	0,82
500	0,92 0,89 0,93	0,91
1000	0,98 0,96 1,00	0,98
2000	1,00 1,00 1,01	1,00
4000	1,02 0,94 0,92	0,96

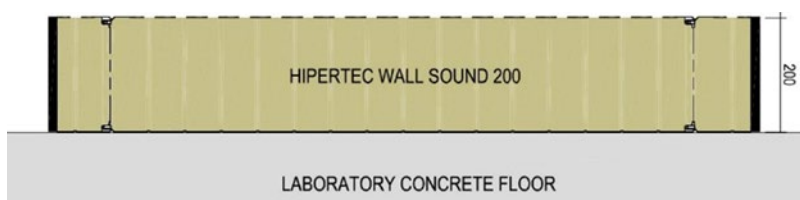


$\alpha_w$  1,00  
NRC 0,90  
Country Netherlands  
Laboratory Peutz  
Report nr. 030  
Test year 2016



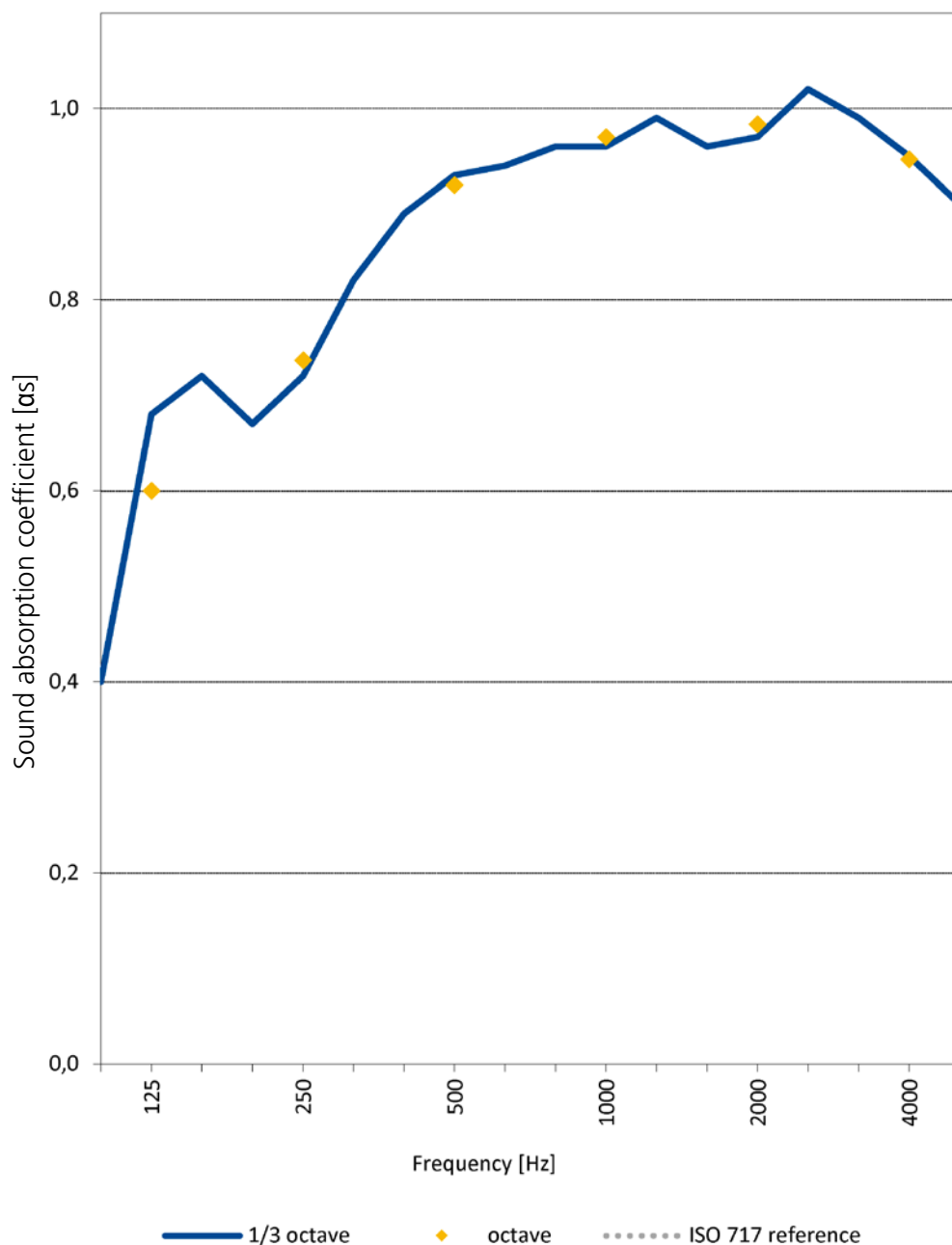
# Measurement of the sound absorption

Product  
Hipertec Wall Sound 200 mm

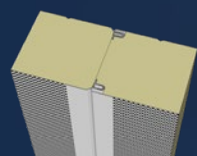


Surface 12,0 m<sup>2</sup>  
Thickness 200 mm  
Standard ISO354:2003

Freq. [Hz]	$\alpha$	
	1/3 oct. oct.	
125	0,40 0,68 0,72	0,60
250	0,67 0,72 0,82	0,74
500	0,89 0,93 0,94	0,92
1000	0,96 0,96 0,99	0,97
2000	0,96 0,97 1,02	0,98
4000	0,99 0,95 0,90	0,95



$\alpha_w$  0,95  
NRC 0,90  
Country Netherlands  
Laboratory Peutz  
Report nr. 032  
Test year 2016

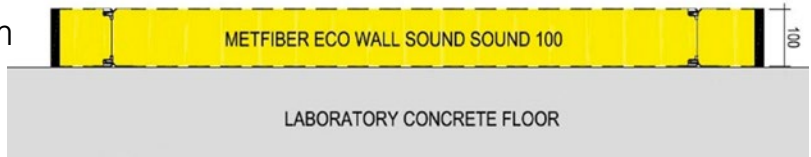




# Measurement of the sound absorption

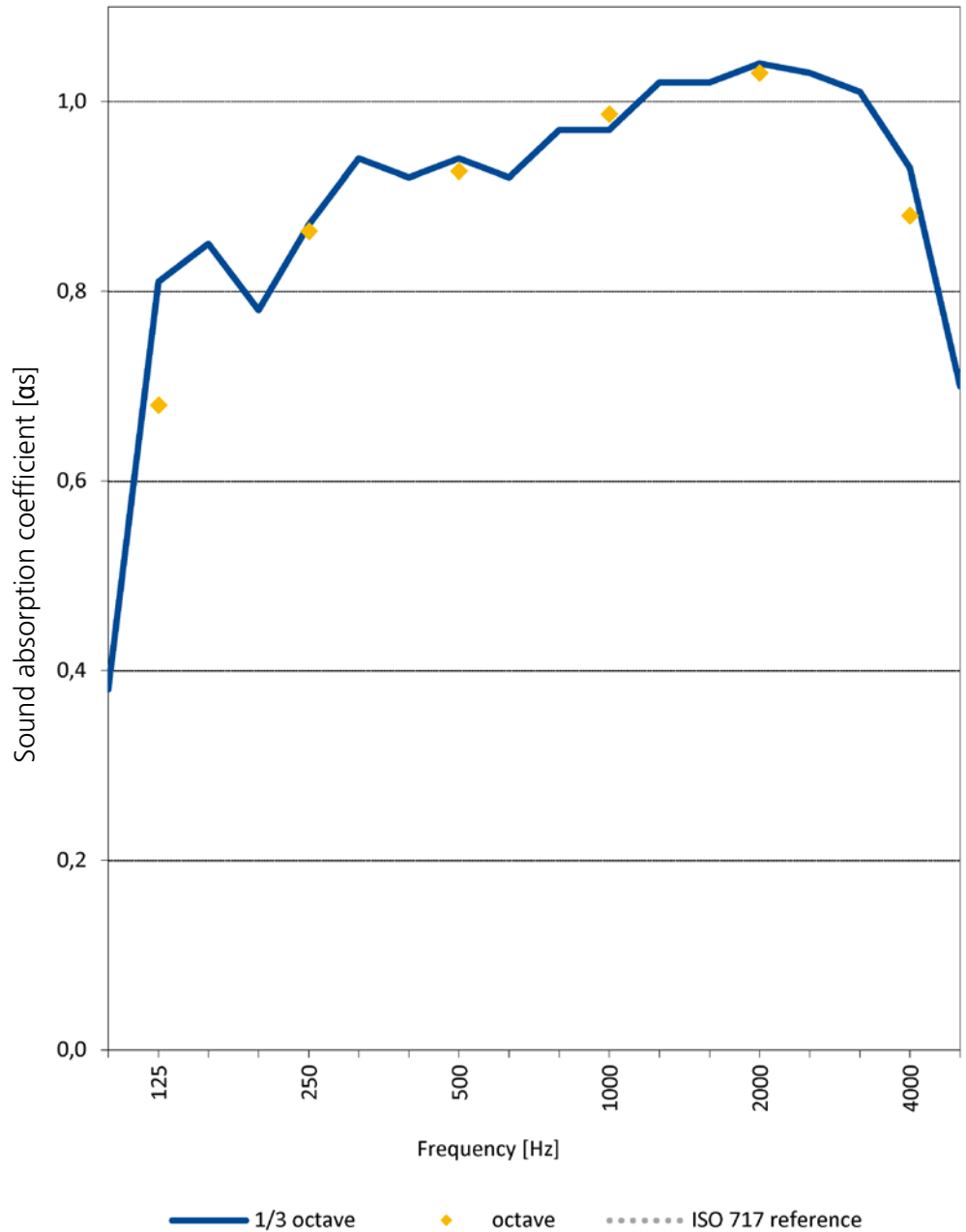
Product

Metfiber Eco Wall Sound Sound 100 mm

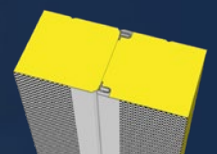


Surface 12,0 m<sup>2</sup>  
 Thickness 100 mm  
 Standard ISO354:2003

Freq. [Hz]	$\alpha$	
	1/3 oct. oct.	
125	0,38 0,81 0,85	0,68
250	0,78 0,87 0,94	0,86
500	0,92 0,94 0,92	0,93
1000	0,97 0,97 1,02	0,99
2000	1,02 1,04 1,03	1,03
4000	1,01 0,93 0,70	0,88

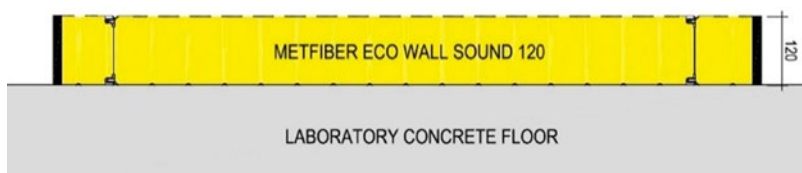


$\alpha_w$  1,00  
 NRC -  
 Country Netherlands  
 Laboratory Peutz  
 Report nr. 040  
 Test year 2017



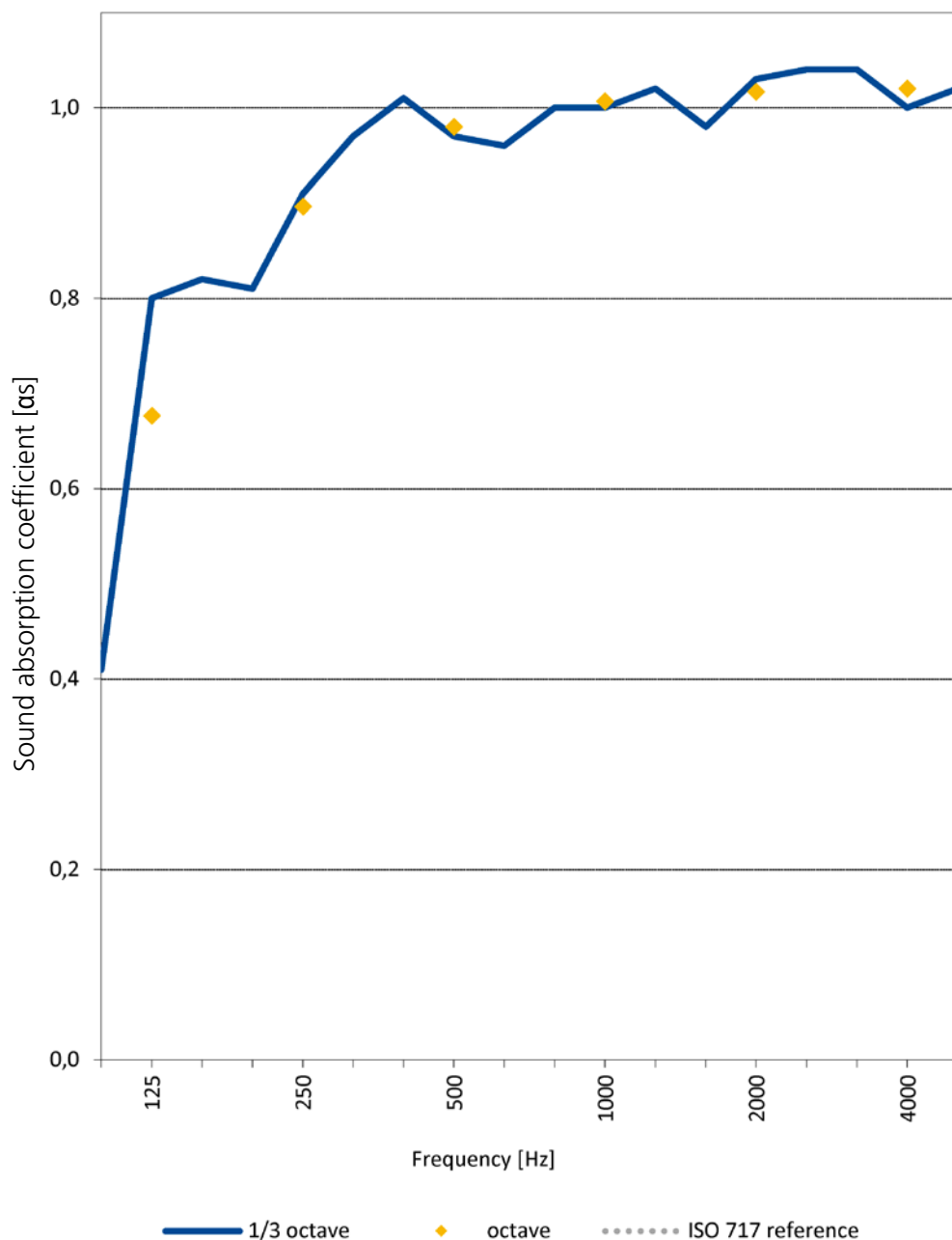
# Measurement of the sound absorption

Product  
Metfiber Eco Wall Sound 120 mm

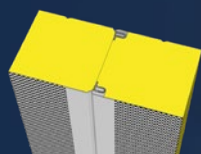


Surface 11,1 m<sup>2</sup>  
Thickness 120 mm  
Standard ISO354:2003

Freq. [Hz]	$\alpha$ 1/3 oct. oct.	
	125	0,41 0,80 0,82
250	0,81 0,91 0,97	0,90
500	1,01 0,97 0,96	0,98
1000	1,00 1,00 1,02	1,01
2000	0,98 1,03 1,04	1,02
4000	1,04 1,00 1,02	1,02



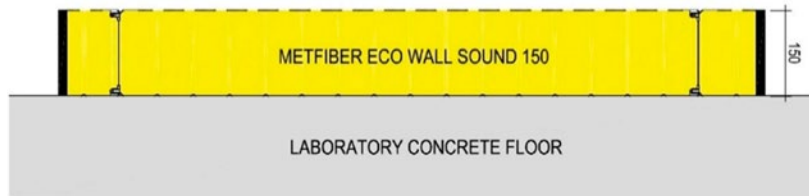
$\alpha_w$  1,00  
NRC 1,00  
Country Netherlands  
Laboratory Peutz  
Report nr. 004  
Test year 2016



# Measurement of the sound absorption

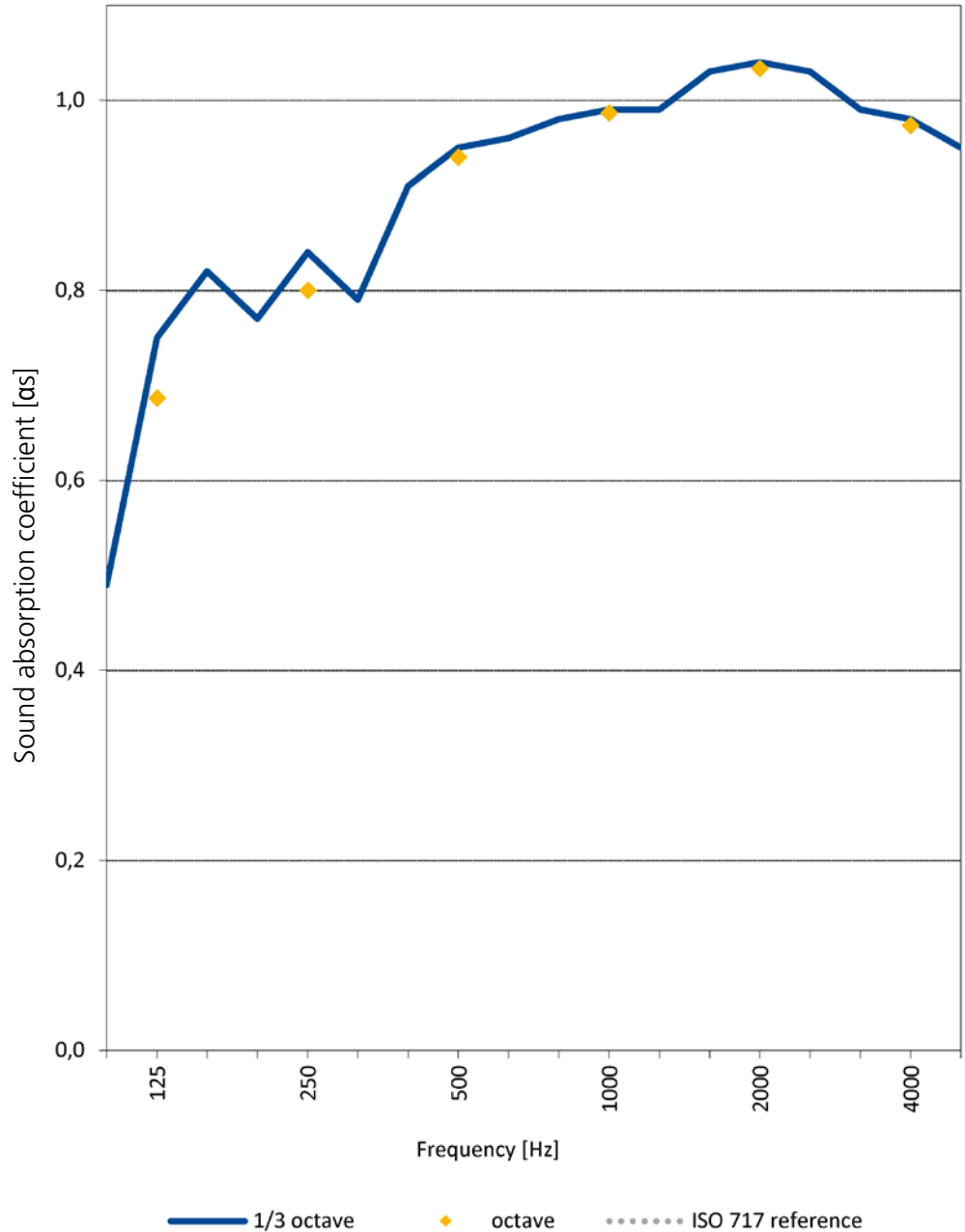
## Product

Metfiber Eco Wall Sound 150 mm

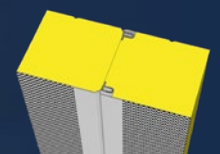


Surface 12,0 m<sup>2</sup>  
 Thickness 150 mm  
 Standard ISO354:2003

Freq. [Hz]	$\alpha$	
	1/3 oct. oct.	
125	0,49 0,75 0,82	0,69
250	0,77 0,84 0,79	0,80
500	0,91 0,95 0,96	0,94
1000	0,98 0,99 0,99	0,99
2000	1,03 1,04 1,03	1,03
4000	0,99 0,98 0,95	0,97

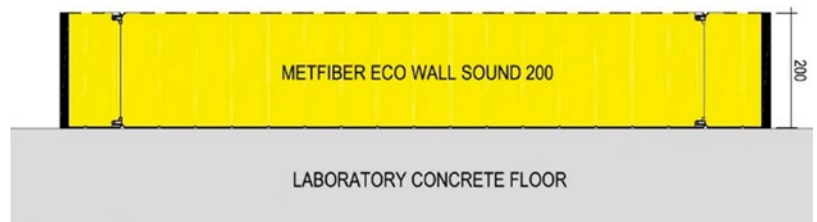


$\alpha_w$  1,00  
 NRC 0,95  
 Country Netherlands  
 Laboratory Peutz  
 Report nr. 042  
 Test year 2015



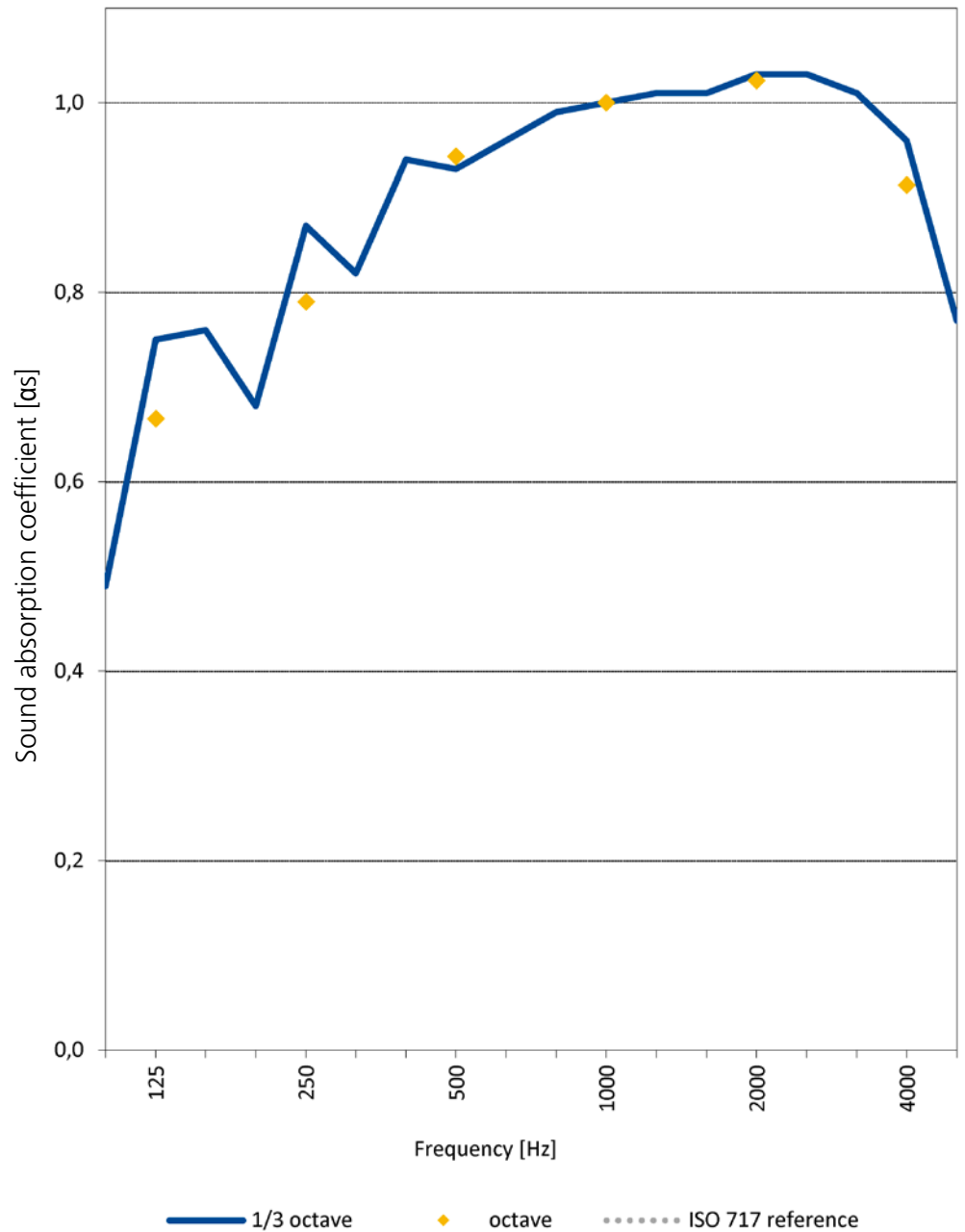
# Measurement of the sound absorption

Product  
Metfiber Eco Wall Sound 200 mm

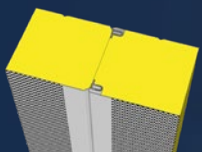


Surface 12,0 m<sup>2</sup>  
Thickness 200 mm  
Standard ISO354:2003

Freq. [Hz]	$\alpha$	
	1/3 oct. oct.	
125	0,49 0,75 0,76	0,67
250	0,68 0,87 0,82	0,79
500	0,94 0,93 0,96	0,94
1000	0,99 1,00 1,01	1,00
2000	1,01 1,03 1,03	1,02
4000	1,01 0,96 0,77	0,91

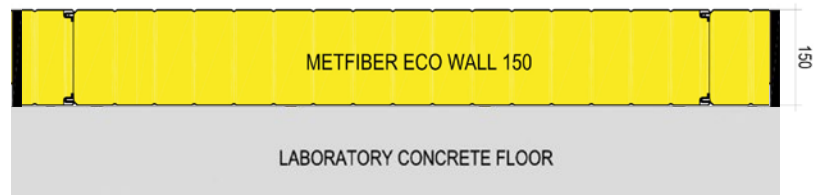


$\alpha_w$  1,00  
NRC 0,95  
Country Netherlands  
Laboratory Peutz  
Report nr. 041  
Test year 2015



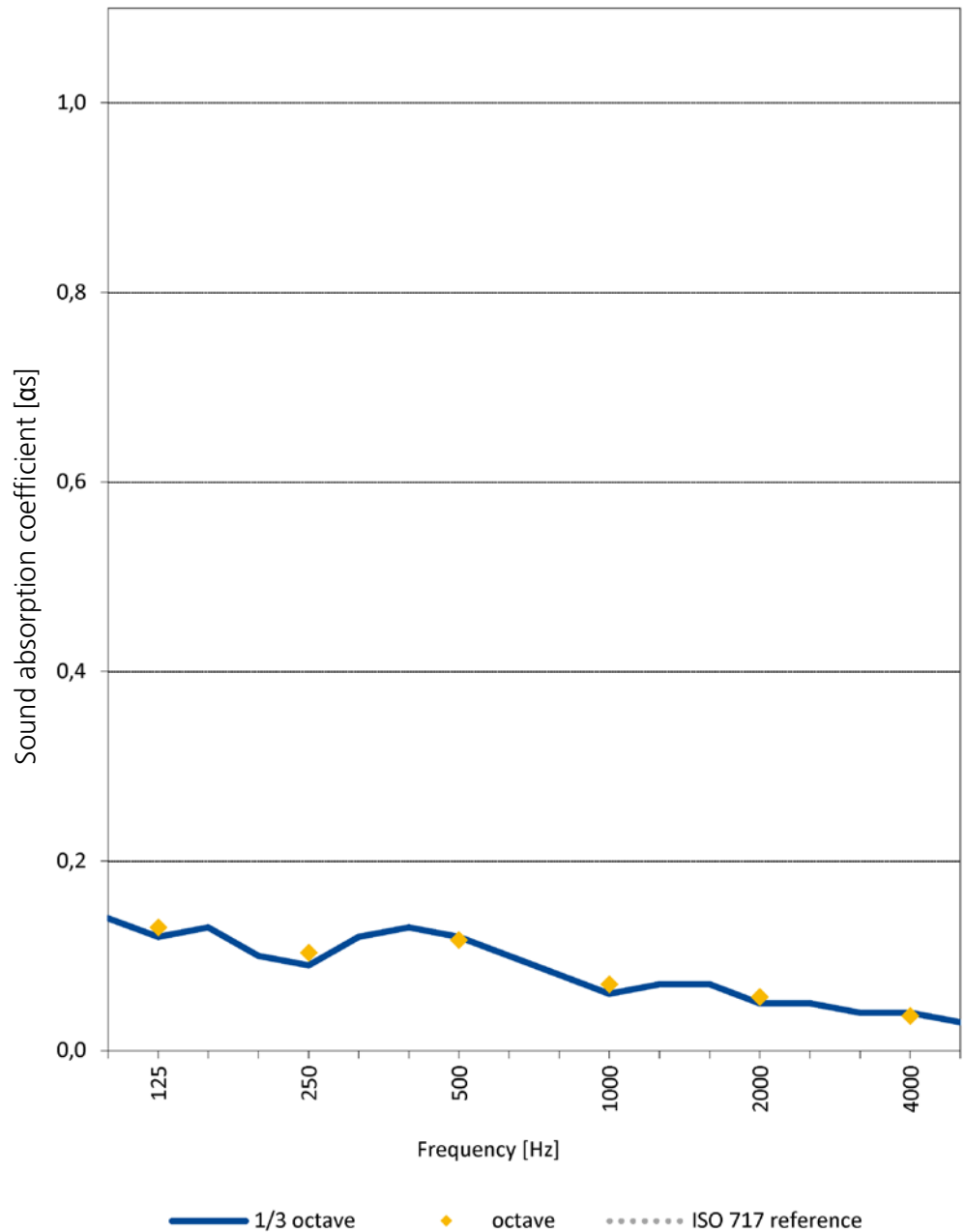
# Measurement of the sound absorption

Product  
Metfiber Eco Wall 150 mm



Surface 11,2 m<sup>2</sup>  
Thickness 150 mm  
Standard ISO354:2003

Freq. [Hz]	$\alpha$	
	1/3 oct. oct.	
125	0,14 0,12 0,13	0,13
250	0,10 0,09 0,12	0,10
500	0,13 0,12 0,10	0,12
1000	0,08 0,06 0,07	0,07
2000	0,07 0,05 0,05	0,06
4000	0,04 0,04 0,03	0,04

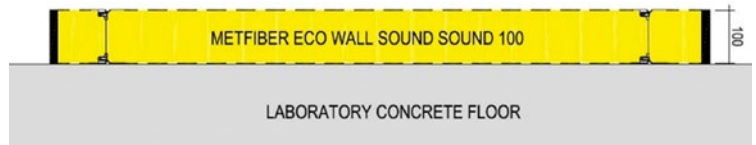


$\alpha_w$  0,10  
NRC 0,10  
Country Netherlands  
Laboratory Peutz  
Report nr. 002  
Test year 2014

# Measurement of the sound absorption

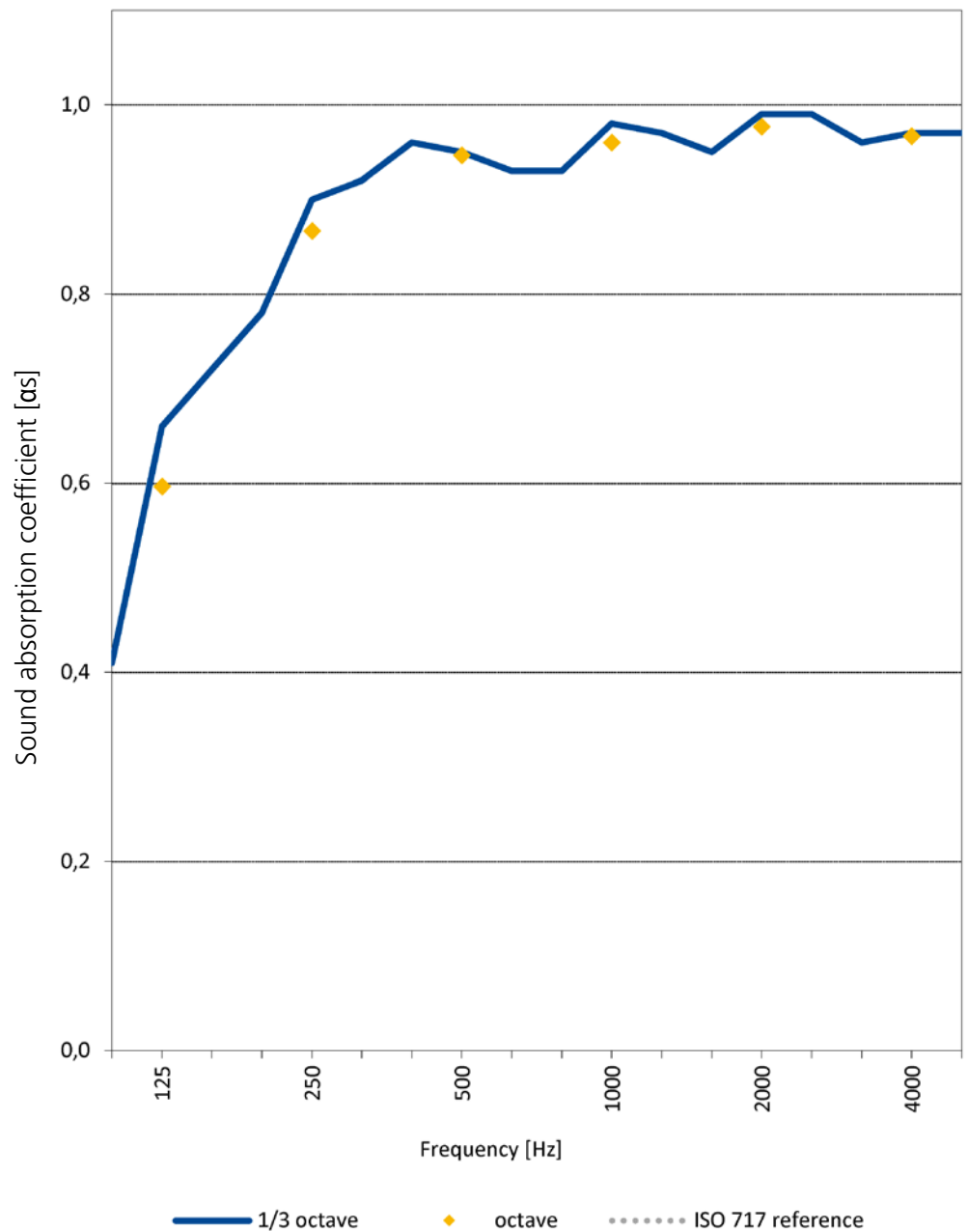
## Product

Metfiber Eco Wall Sound Sound 100 mm

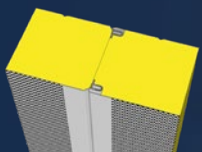


Surface 11,2 m<sup>2</sup>  
 Thickness 100 mm  
 Standard ISO354:2003

Freq. [Hz]	$\alpha$	
	1/3 oct. oct.	
125	0,41 0,66 0,72	0,60
250	0,78 0,90 0,92	0,87
500	0,96 0,95 0,93	0,95
1000	0,93 0,98 0,97	0,96
2000	0,95 0,99 0,99	0,98
4000	0,96 0,97 0,97	0,97



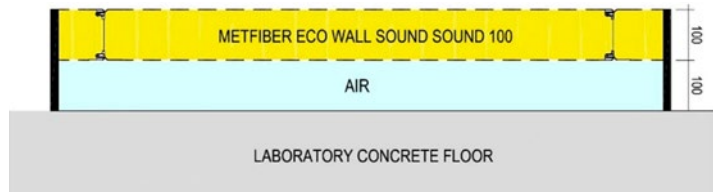
$\alpha_w$  1,00  
 NRC 0,95  
 Country Netherlands  
 Laboratory Peutz  
 Report nr. 003  
 Test year 2014



# Measurement of the sound absorption

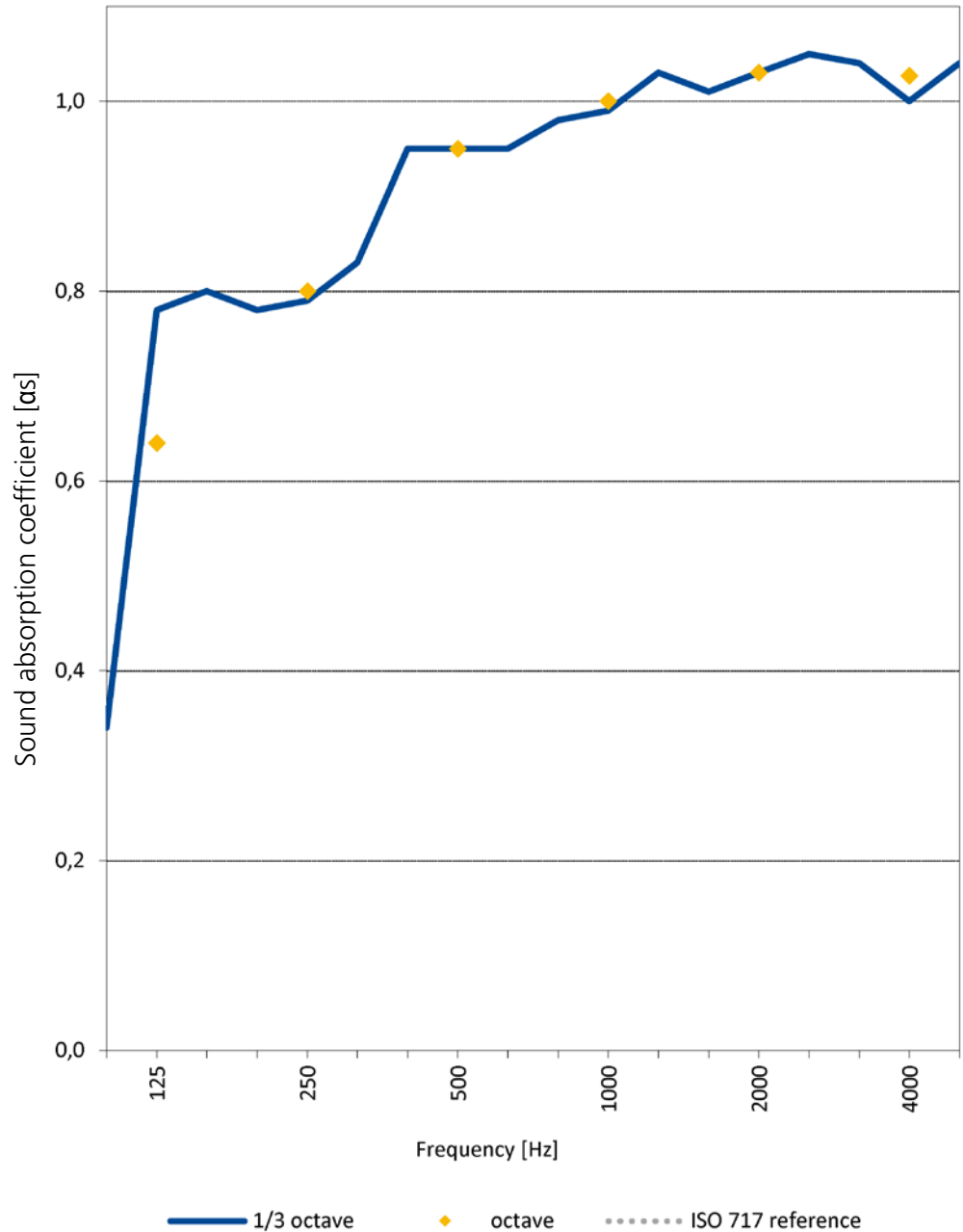
## Product

Metfiber Eco Wall Sound Sound 100 mm  
Cavity air 100 mm

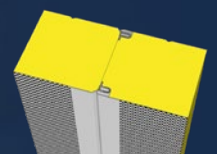


Surface 12,0 m<sup>2</sup>  
Thickness 200 mm  
Standard ISO354:2003

Freq. [Hz]	$\alpha$	
	$\frac{1}{3}$ oct. oct.	
125	0,34 0,78 0,80	0,64
250	0,78 0,79 0,83	0,80
500	0,95 0,95 0,95	0,95
1000	0,98 0,99 1,03	1,00
2000	1,01 1,03 1,05	1,03
4000	1,04 1,00 1,04	1,03



$\alpha_w$  1,00  
NRC 0,95  
Country Netherlands  
Laboratory Peutz  
Report nr. 037  
Test year 2016



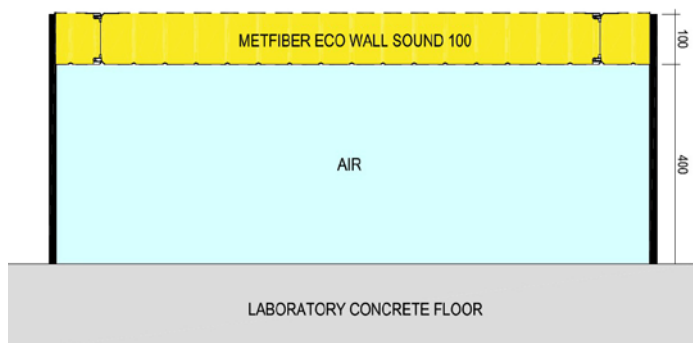
# Measurement of the sound absorption

## Product

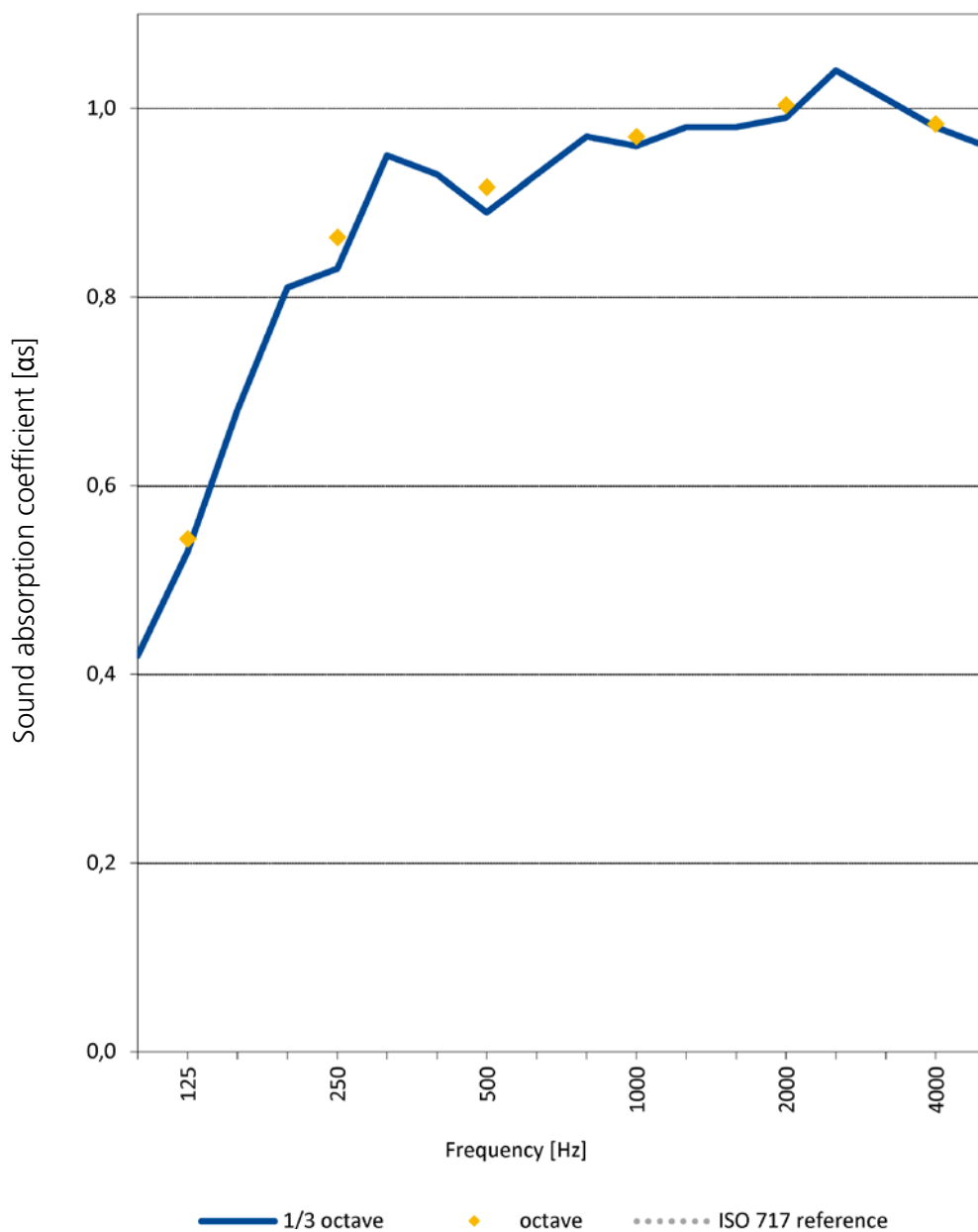
Metfiber Eco Wall Sound Sound 100 mm

Cavity air 400 mm

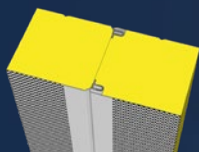
Surface 14,7 m<sup>2</sup>  
 Thickness 500 mm  
 Standard ISO354:2003



Freq. [Hz]	$\alpha$	
	1/3 oct. oct.	
125	0,42 0,53 0,68	0,54
250	0,81 0,83 0,95	0,86
500	0,93 0,89 0,93	0,92
1000	0,97 0,96 0,98	0,97
2000	0,98 0,99 1,04	1,00
4000	1,01 0,98 0,96	0,98



$\alpha_w$  0,95  
 NRC -  
 Country Netherlands  
 Laboratory Peutz  
 Report nr. 038  
 Test year 2020

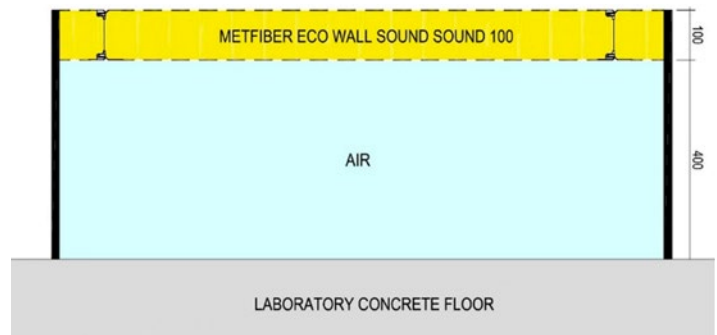




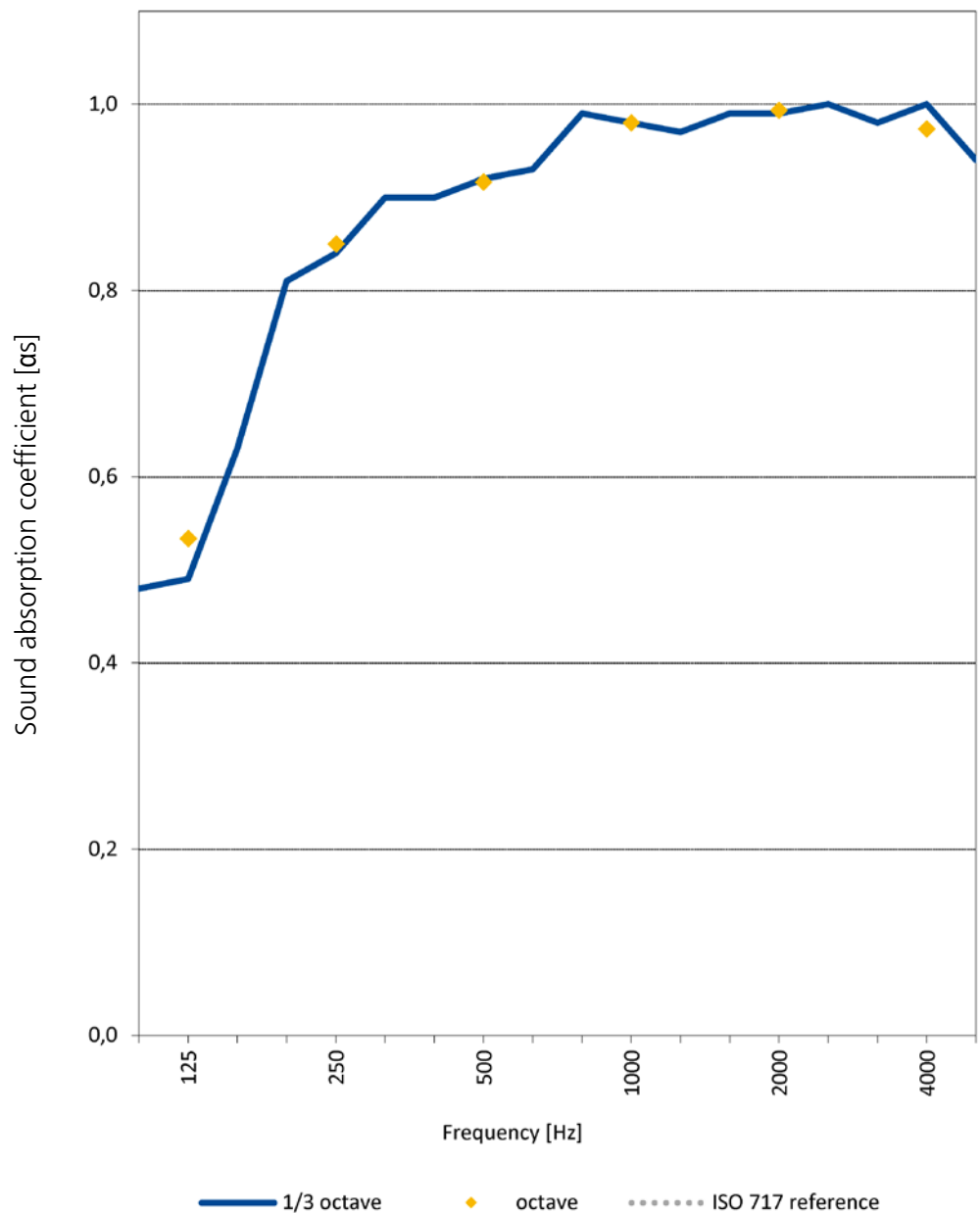
# Measurement of the sound absorption

Product  
Metfiber Eco Wall Sound Sound 100 mm  
Cavity air 400 mm

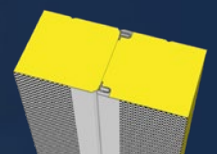
Surface 12,0 m<sup>2</sup>  
Thickness 500 mm  
Standard ISO354:2003



Freq. [Hz]	$\alpha$ 1/3 oct. oct.	
	125	0,48 0,49 0,63
250	0,81 0,84 0,90	0,85
500	0,90 0,92 0,93	0,92
1000	0,99 0,98 0,97	0,98
2000	0,99 0,99 1,00	0,99
4000	0,98 1,00 0,94	0,97



$\alpha_w$  1,00  
NRC -  
Country Netherlands  
Laboratory Peutz  
Report nr. 038  
Test year 2020



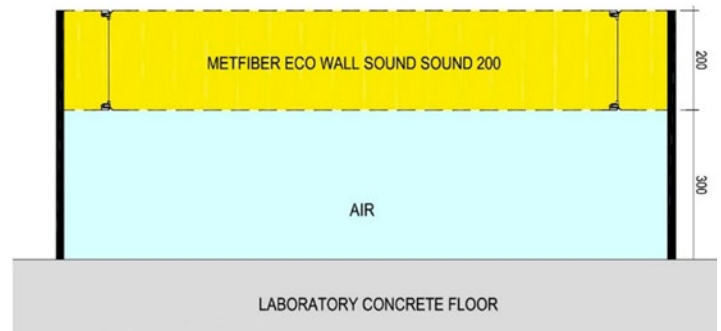
# Measurement of the sound absorption

## Product

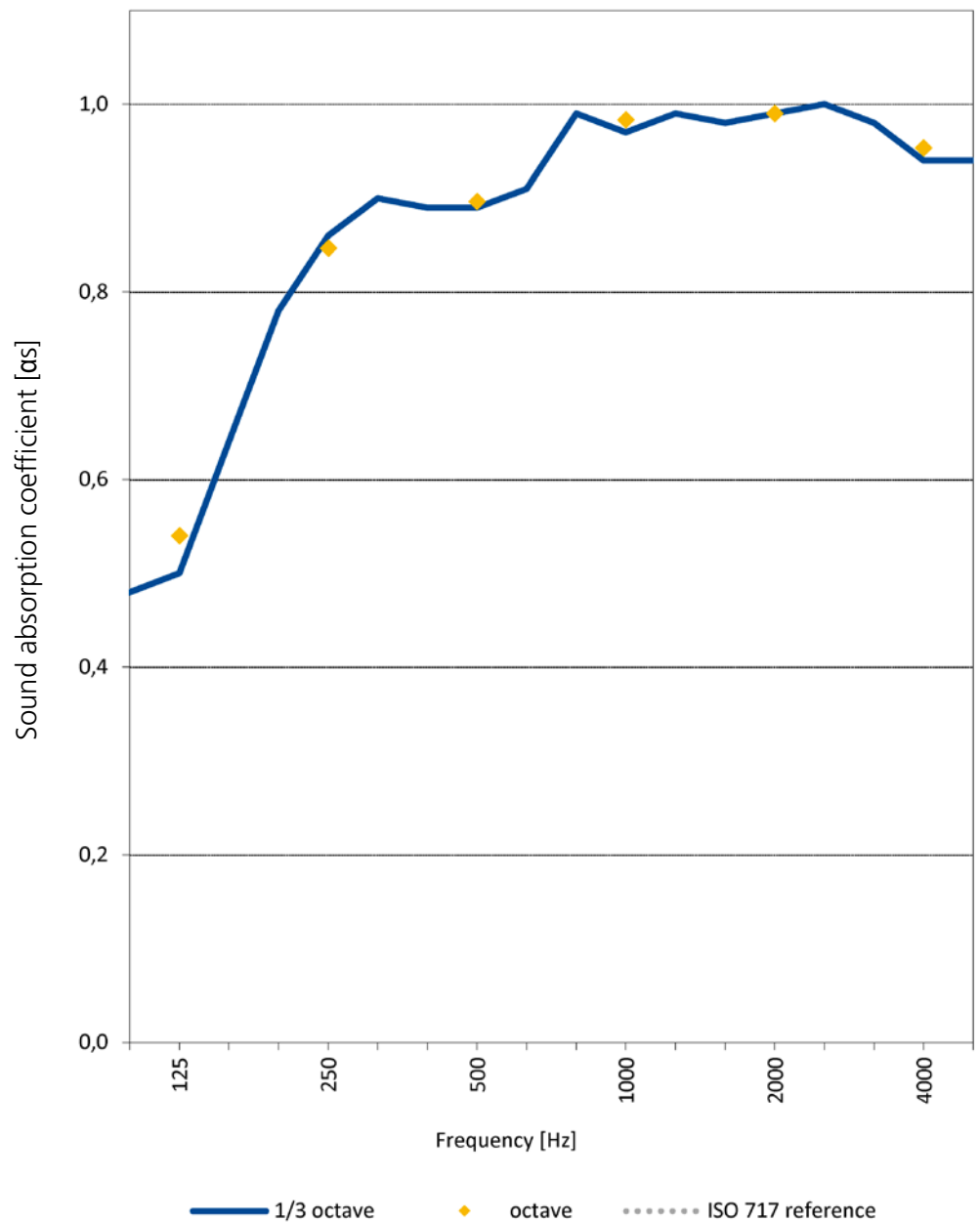
Metfiber Eco Wall Sound Sound 200 mm

Cavity air 300 mm

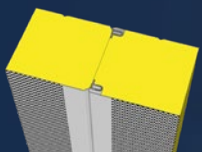
Surface 12,0 m<sup>2</sup>  
 Thickness 500 mm  
 Standard ISO354:2003



Freq. [Hz]	$\alpha$	
	1/3 oct. oct.	
125	0,48 0,50 0,64	0,54
250	0,78 0,86 0,90	0,85
500	0,89 0,89 0,91	0,90
1000	0,99 0,97 0,99	0,98
2000	0,98 0,99 1,00	0,99
4000	0,98 0,94 0,94	0,95

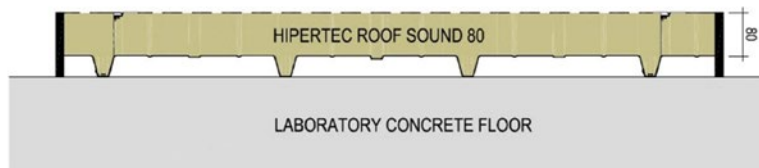


$\alpha_w$  1,00  
 NRC -  
 Country Netherlands  
 Laboratory Peutz  
 Report nr. 038  
 Test year 2020



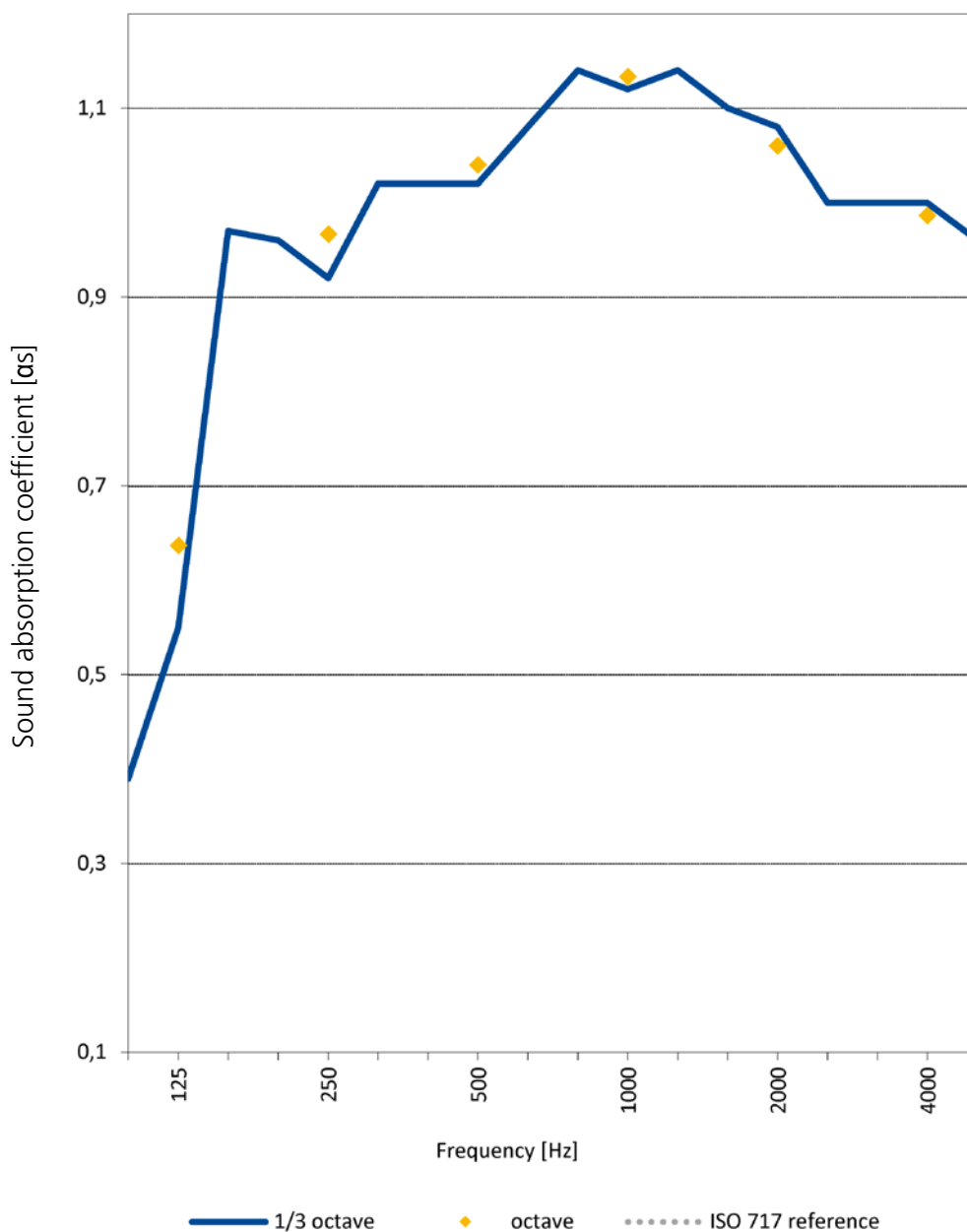
# Measurement of the sound absorption

Product  
Hipertec Roof Sound 80 mm

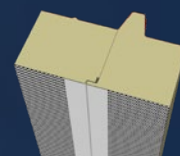


Surface 12,0 m<sup>2</sup>  
Thickness 80 mm  
Standard ISO354:1985

Freq. [Hz]	$\alpha$	
	1/3 oct. oct.	
125	0,39 0,55 0,97	0,64
250	0,96 0,92 1,02	0,97
500	1,02 1,02 1,08	1,04
1000	1,14 1,12 1,14	1,13
2000	1,10 1,08 1,00	1,06
4000	1,00 1,00 0,96	0,99

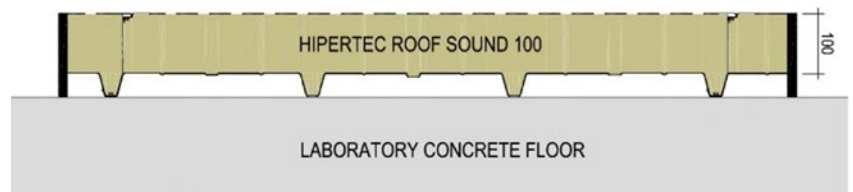


$\alpha_w$  1,00  
NRC -  
Country Italy  
Laboratory Giordano  
Report nr. 051  
Test year 1997



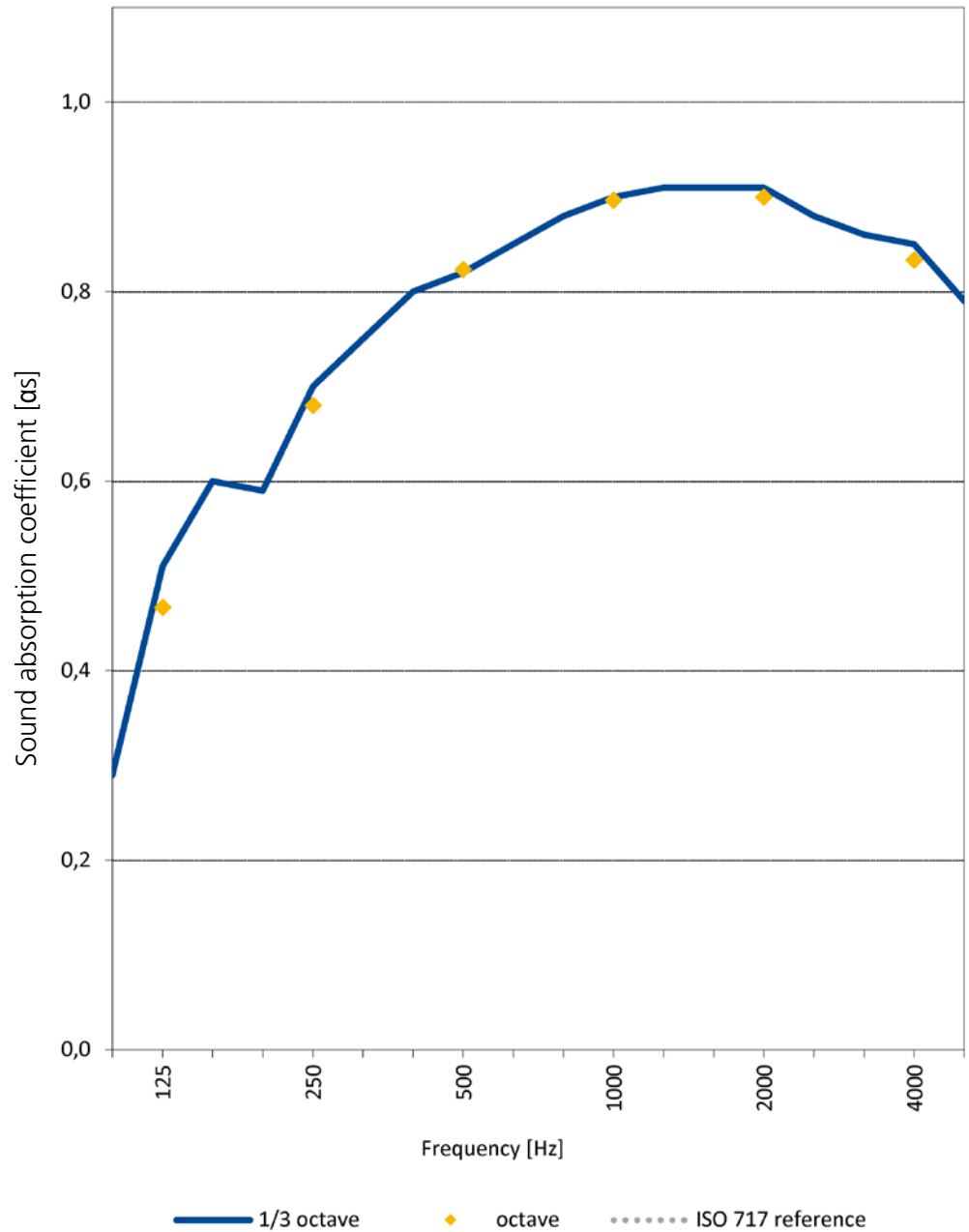
# Measurement of the sound absorption

Product  
Hipertec Roof Sound 100 mm

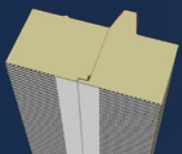


Surface 14,0 m<sup>2</sup>  
Thickness 100 mm  
Standard ISO354:1993

Freq. [Hz]	$\alpha$	
	1/3 oct. oct.	
125	0,29 0,51 0,60	0,47
250	0,59 0,70 0,75	0,68
500	0,80 0,82 0,85	0,82
1000	0,88 0,90 0,91	0,90
2000	0,91 0,91 0,88	0,90
4000	0,86 0,85 0,79	0,83

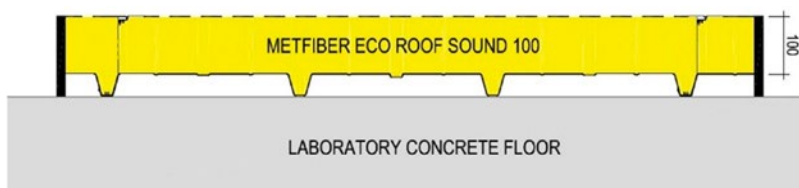


$\alpha_w$  0,85  
NRC -  
Country Germany  
Laboratory Fraunhofer  
Report nr. 035  
Test year 1999



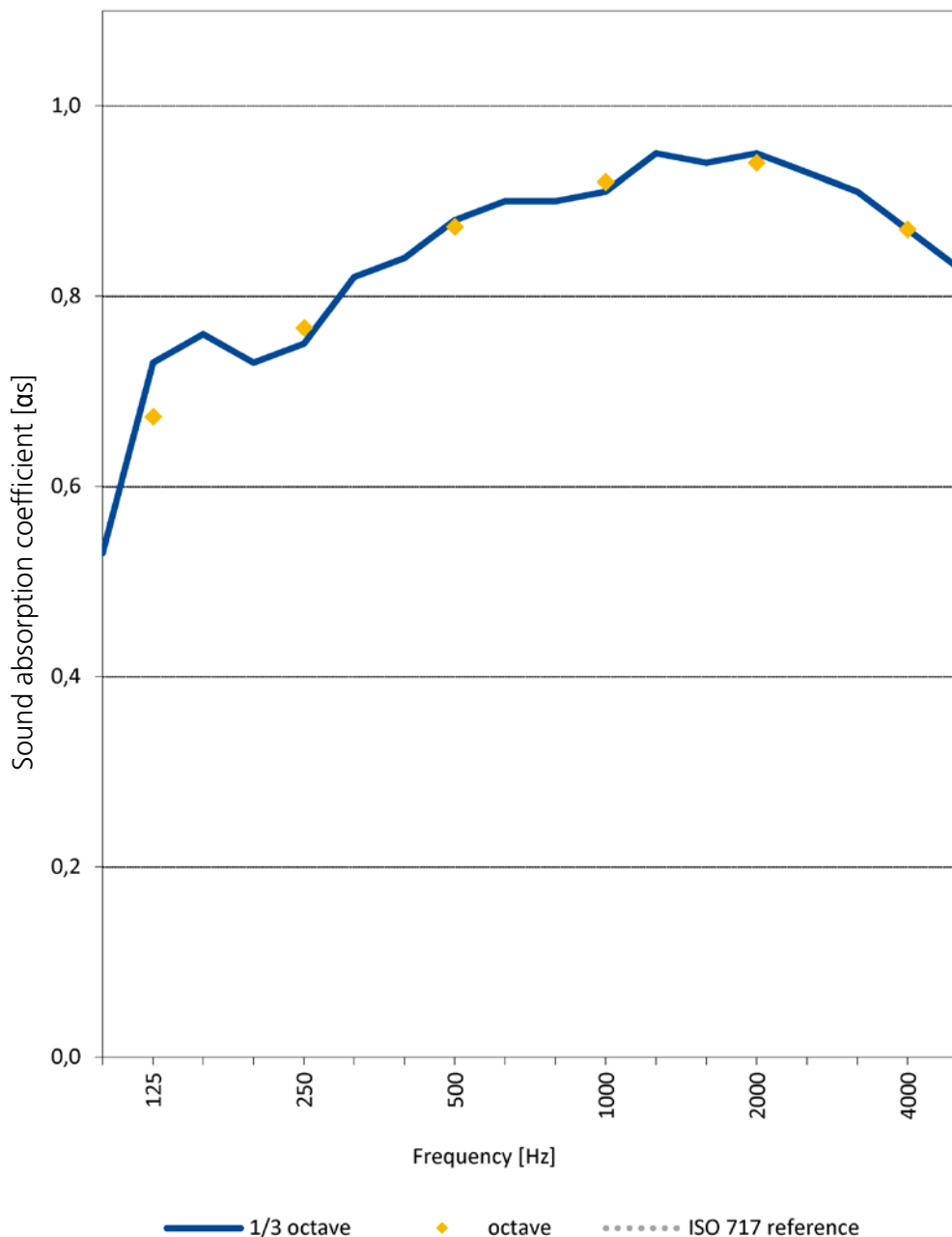
# Measurement of the sound absorption

Product  
Metfiber Eco Roof Sound 100 mm

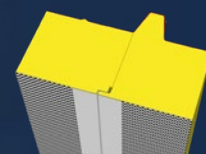


Surface 12,0 m<sup>2</sup>  
Thickness 100 mm  
Standard ISO354:2003

Freq. [Hz]	$\alpha$ 1/3 oct. oct.	
	125	0,53 0,73 0,76
250	0,73 0,75 0,82	0,77
500	0,84 0,88 0,90	0,87
1000	0,90 0,91 0,95	0,92
2000	0,94 0,95 0,93	0,94
4000	0,91 0,87 0,83	0,87

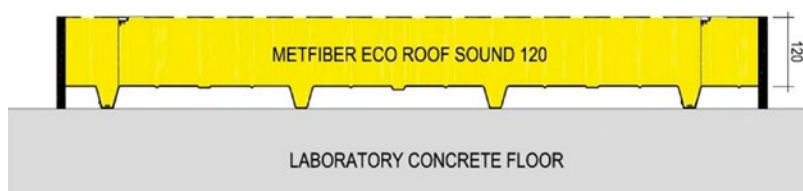


$\alpha_w$  0,90  
NRC 0,85  
Country Netherlands  
Laboratory Peutz  
Report nr. 033  
Test year 2016



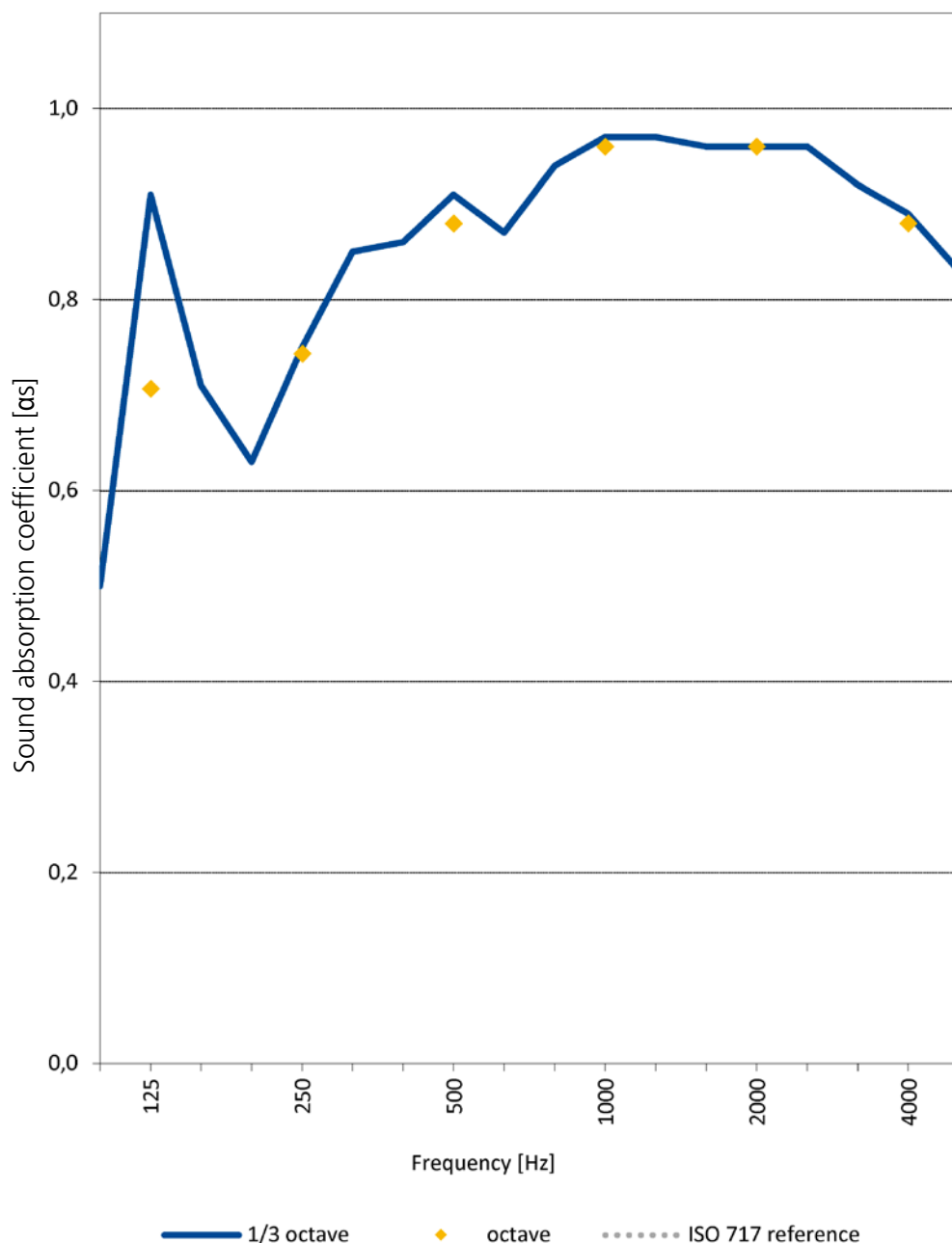
# Measurement of the sound absorption

Product  
Metfiber Eco Roof Sound 120 mm



Surface 12,0 m<sup>2</sup>  
Thickness 120 mm  
Standard ISO354:2003

Freq. [Hz]	$\alpha$	
	1/3 oct. oct.	
125	0,50 0,91 0,71	0,71
250	0,63 0,75 0,85	0,74
500	0,86 0,91 0,87	0,88
1000	0,94 0,97 0,97	0,96
2000	0,96 0,96 0,96	0,96
4000	0,92 0,89 0,83	0,88



$\alpha_w$  0,95  
NRC 0,90  
Country Netherlands  
Laboratory Peutz  
Report nr. 034  
Test year 2016

In 1961 Metecno was founded under the name "Metallotecnica Italiana" a producer of conventional multi-layer wall-and roof systems. Back then, the common successive installation of an internal sheet, spacer, insulation layer and external sheet directly on the building showed major disadvantages regarding duration, cost and constant quality of this installation procedure. In 1965, after intense research for the development of a prefabricated insulated element, the world's first fully automated continuous production line for sandwich panels created a completely new way to build. The massive success of this product led to increasing demand, therefore facilitating geographic expansion with new production lines, first in Europe succeeded by America and Asia.

Profound expertise gathered over decades for thermal insulation, fire protection and sound insulation of sandwich panels led to specialization into certain fields of competence. As Metecno Sound division we have specialized in solutions for complex acoustic requirements.

Extensive testing and approvals at independent laboratories (notified bodies) as well as many years of experience in the field of acoustic solutions contribute to the realization of your individual requirements by implementing our products and to simulate and approve their suitability in the forefront.

Got any questions or need technical support? – feel free to contact us!



**Andrew Koster**

Sales Manager acoustics export

+31 683 706 436



**Markus Bayha**

Sales manager acoustics - Germany-Austria-Switzerland

+49 7151 20609 80

+49 1638 203115



**François Corten**

Sales Manager acoustics - France

+32 4 387 88 25

+32 47347 1835

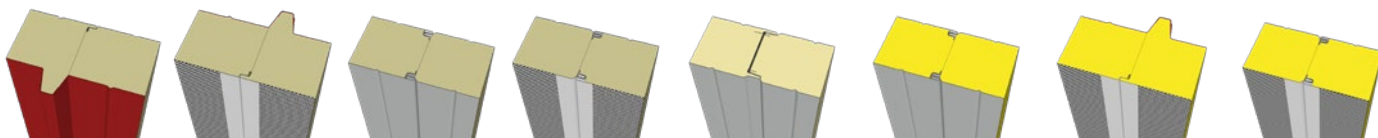


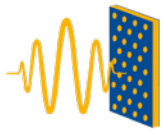
**Michel Graeven**

Sales office acoustics

+32 4 387 88 25

+32 470 60 14 07





# metecno SOUND

## DEUTSCHLAND

**Metecno Bausysteme GmbH**  
Am Amselberg 1  
D-99444 Blankenhain  
Telefon +49 36454 56 0  
Telefax +49 36454 56 100  
e-mail [vertrieb@metecno.de](mailto:vertrieb@metecno.de)  
[www.metecno.de](http://www.metecno.de)

## ÖSTERREICH

**Metecno Bausysteme GmbH**  
Margaretenstr. 72  
A-1050 Wien  
Telefon +43 1 58 52 618  
Telefax +43 1 58 52 618 18  
e-mail [office@metecno.at](mailto:office@metecno.at)  
[www.metecno.at](http://www.metecno.at)

## BELGIEN

**Metecno Bausysteme GmbH**  
Telefon +32 4 387 88 25  
e-mail [benelux@metecno.de](mailto:benelux@metecno.de)  
[www.metecno.de](http://www.metecno.de)

Applicable general terms of sales available on request.

Metecno reserves the right to make necessary changes and improvements to the products without prior notice.

Metecno is not responsible for errors, including typos.

## WWW.METECNO-SOUND.DE

### ARGENTINIEN

**Oficina Argentina**  
Calle Humboldt N°1510  
3er. Piso (1414)  
Buenos Aires  
Telefon (54-11) 4777-7231  
e-mail [info@metecnoargentina.com](mailto:info@metecnoargentina.com)  
[www.metecnoargentina.com](http://www.metecnoargentina.com)

### AUSTRALIEN

**Metecno Pty Ltd**  
111 Ingram Rd, Acacia Ridge  
Queensland, 4110  
Telefon +61 (07) 3323 8500  
[www.bondor.com.au](http://www.bondor.com.au)

### BULGARIEN

**Metecno Bulgaria AD**  
Grivishko shosse 1  
5800 Pleven  
Telefon +359 64 882 900  
Telefax +359 64 841 180  
e-mail [info@metecno.bg](mailto:info@metecno.bg)  
[www.metecno.bg](http://www.metecno.bg)

### CHILE

**Metecno de Chile S.A.**  
AV. Nueva Industria 200  
Comuna de Quilicura,  
Santiago de Chile  
Telefon +56 2 438 7590  
Telefax +56 2 438 7500 / 90  
e-mail [info@metecno.cl](mailto:info@metecno.cl)  
[www.metecno.cl](http://www.metecno.cl)

### CHINA

**Zhejiang Metecno  
New Buidling Panels, CO., LTD.**  
N° 66, Jianshe 3rd Road, Xiaoshan  
Economic & Technical  
Development Zone,  
Hangzhou City, Zhejiang Province,  
PR China  
Telefon +86 571 826 08802  
Telefax +86 571 826 08808  
e-mail [gmooffice@metecno-zj.cn](mailto:gmooffice@metecno-zj.cn)  
[www.metecno-zj.cn](http://www.metecno-zj.cn)

### GRIECHENLAND

**Metecno Hellas**  
Π. ΣΕΡ. ΤΣΑΚΜΑΝΗ 3-5  
572 00 ΛΑΓΚΑΔΑΣ - ΘΕΣΣΑΛΟΝΙΚΗ  
ΤΗΛ./FAX: 23940 23738  
KIN.: 6981 241281  
e-mail [info@metecno.gr](mailto:info@metecno.gr)  
[www.metecno.gr](http://www.metecno.gr)

### INDIEN

**Metecno India Pvt LTD.**  
138/30, 2ND FLOOR FLORIDA TOWERS,  
NELSON MANICKAM ROAD,  
CHENNAI - 29.  
Telefon +91 44 - 45608800  
Telefax +91 44 43553351  
e-mail [enquiry@metecno.in](mailto:enquiry@metecno.in)  
[www.metecno.in](http://www.metecno.in)

### INDONESIEN

**PT Bondor Indonesia**  
Kawasan Industri Sentul  
Jalan Olympic Raya Kav. A2  
Sentul - Bogor 16180  
Telefon +62-21-8756001  
Telefax +62-21-8756017  
e-mail [sales@bondor.co.id](mailto:sales@bondor.co.id)  
[www.bondor.co.id](http://www.bondor.co.id)

### ITALIEN

**Metecno Italia srl**  
Zona Industriale Cimafava  
29013 Carpaneto, Piacentino  
Telefon +39 0523 853811  
Telefax +39 0523 859728  
[www.metecno.com](http://www.metecno.com)

**Metecno Italia srl**  
Via Nazario Sauro  
33090 Fraz. Toppo, Travesio  
Telefon +39 0427 591311  
Telefax +39 0427 90168  
[www.metecno.com](http://www.metecno.com)

### KOLUMBIEN

**Metecno de Colombia S.A.**  
Parque Industrial El Paraíso Manzana C Lote 16  
Santander de Quilichao - Cauca  
Telefon +57 2 8295290  
Telefax +57 2 8295292  
e-mail [ventas@metecnocolombia.com](mailto:ventas@metecnocolombia.com)  
[www.metecnocolombia.com](http://www.metecnocolombia.com)

### MEXIKO

**Metecno Mexico S. A. de C. V.**  
Av. Mesa de Leon No.116,  
C.P. 76220 S.Rosa Jauregui, Queretaro  
Telefon (52-442) 229-5300  
e-mail [ventas@metecnomexico.com](mailto:ventas@metecnomexico.com)  
[www.metecnomexico.com](http://www.metecnomexico.com)

### PERU

**Oficina Peru**  
Av. Andres Aramburu No 855  
Con Calle Las golondrinas No 393  
Esquina DP 302  
Tel. (511) 421-3893  
e-mail [info@metecnooperu.com](mailto:info@metecnooperu.com)  
[www.metecnooperu.com](http://www.metecnooperu.com)

### RUMÄNIEN

**Metecno Trading Romania SRL**  
Str. Mihail Kogalniceanu nr. 17  
Bloc C4, Etaj 1, Apartament 1  
500090 Brasov ROMANIA  
Telefon +40 268 406 249  
Telefax +40 268 406 248  
e-mail [office@metecno.ro](mailto:office@metecno.ro)  
[www.metecno.ro](http://www.metecno.ro)

### SPANIEN

**Metecno España S.A.**  
Poligono Industrial de Bayas  
Parcelas 107-110  
09200 Miranda de Ebro, Burgos  
Telefon +34 947 330690  
Telefax +34 947 330678  
e-mail [info@metecnoes.com](mailto:info@metecnoes.com)

### SRI-LANKA

**Metecno Lanka (PVT) LTD**  
No. 185, Korathota, Kaduwela,  
Sri Lanka  
Telefon +94 115 795100  
Telefax +94 115 443322  
e-mail [info@metecnolanka.lk](mailto:info@metecnolanka.lk)  
[info@metroof.lk](mailto:info@metroof.lk)  
<http://www.metecnolanka.com>

### THAILAND

**Metecno Pannelli (Thailand)**  
25 Moo 9, Soi Watmahawong  
Poochaosamingprai, Samrong-klang  
Samutprakarn 10130  
Telefon +66 2 755-9265  
Telefax +66 2 754-3482  
e-mail [wanchai@metecno.co.th](mailto:wanchai@metecno.co.th)

### VIETNAM

**Metecno Vietnam LTD.**  
Sales office  
Room No. F34,  
40 Ba Huyen Thanh Quan Street,  
District 3, Ho Chi Minh City,  
S.R. Vietnam  
Telefon +84 8 930 0962, 930 0973  
Telefax +84 8 930 0991  
e-mail [sudarshan.bt@metecno.com.vn](mailto:sudarshan.bt@metecno.com.vn)  
[diep.ta@metecno.com.vn](mailto:diep.ta@metecno.com.vn)

### Metecno Vietnam LTD.

Lot No. 13, Road No. 16A  
Bien Hoa Industrial Zone 2,  
Bien Hoa City  
Dong Nai Province  
S.R.Vietnam  
Telefon +84 61 3833 640 - 641  
Telefax +84 61 3833 643  
e-mail [metecno\\_factory@hcm.fpt.vn](mailto:metecno_factory@hcm.fpt.vn)  
[www.metecno.com](http://www.metecno.com)